

Greenfield

OUTDOOR PLEASURE



Roberti

Greenfield

the new in&outdoor

Conosci te stesso

Fin dall'antichità questo richiamo riecheggia inciso sull'ingresso dei nostri templi. Coloro che ci sono riusciti si dice abbiano trovato un tesoro inestimabile: di sentimenti, pensieri ed emozioni. Meditate, dunque, oziate... prendetevi cura di voi. Con le collezioni Greenfield di Roberti potrete percorrere, senza muovervi, spazi infiniti. Per raggiungere una totale empatia con l'ambiente architettonico che vi circonda e il suo paesaggio.

Know yourself

Since ancient times, this appeal has been echoed and impressed on the entrance to our temples. People who have succeeded in doing so are said to have found a priceless treasure of sentiment, thoughts and emotions. So, take it to heart, relax and...take care of yourselves. With Greenfield collections by Roberti, you can travel through endless space without moving. To achieve total empathy with the architectural layout that surrounds you and your path through life.

Erkenne Dich Selbst

Eine Aufforderung, die schon seit der Antike über dem Eingang unserer Tempel geschrieben steht. Man sagt, dass all jene, die dies geschafft haben, einen unermesslichen Schatz an Gefühlen, Gedanken und Emotionen gefunden haben. Meditieren Sie also und entspannen Sie sich ... verwöhnen Sie sich. Mit den Kollektionen Greenfield von Roberti können Sie unendliche Weiten durchqueren, ohne sich fortzubewegen, in vollkommener Empathie mit dem umliegenden architektonischen Ambiente und seiner Landschaft.

Connais-toi toi-même

Dès l'Antiquité, cette devise a été gravée à l'entrée de nos temples. On dit que ceux qui y sont parvenus ont trouvé un trésor inestimable : de sentiments, pensées et émotions. Méditez, détendez-vous ... prenez soin de vous-même. Avec les collections Greenfield de Roberti, vous pourrez traverser des espaces infinis sans vous déplacer et atteindre une empathie totale avec le décor architectonique qui vous entoure et son paysage d'émotions.



table of contents



Coral Reef 4



Coral Reef 20



Hamptons Graphics 32



Hamptons Graphics 36



Hamptons Graphics 52



Hamptons graphics 56



Hamptons 74



Samba Rio 88



Samba Rio 96



Caribe 102 St. Tropez 105



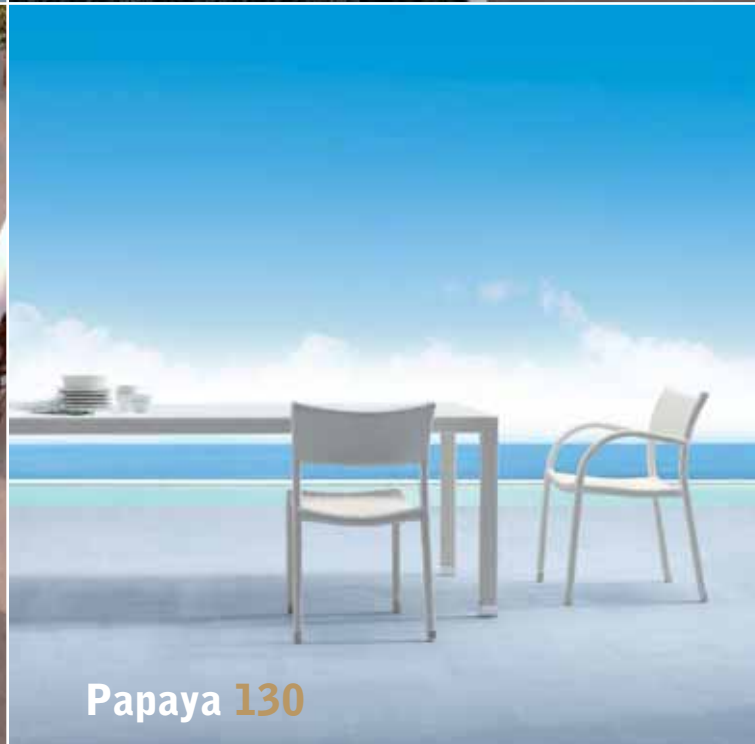
Igloo 119



Les Iles 124



Coconut 128



Papaya 130



Samba 142



contract 148



materials & fabrics 152

Coral Reef





Coral Reef
(white)

(mosaic ocra - kristal ocra)

art. 9802F

elem.2 posti - 2 seats element
2 Sitz Element - élément 2 places

art. 9818

tavolino - storage table
Kleintisch - table de rangement

Coral Reef



Coral Reef
(white)
(mosaic ocra - kristal ocra)

art. 9802F
elem.2 posti - 2 seats element
2 Sitz Element - élément 2 places

art. 9818
tavolino - storage table
Kleintisch - table de rangement





Coral Reef
(oval sunloom white)
(natte bianco - menta)

Coral Reef

Coral Reef
(oval sunloom white)
(natte bianco - menta)

art. 9842
set-composition

art. 9852
parasole - sunshade
Sonnenschirm - parasol

art. 9850
tavolino - coffee table
Couchtisch - table basse






Coral Reef
(terra - corda)
(natte fumo - natte erica)

- art. 9841F
set-composition
- art. 9852
parasole - sunshade
Sonnenschirm - parasol
- art. 9850
tavolino - coffee table
Couchtisch - table basse



Coral Reef
(terra)
(natte fumo - natte erica)



Coral Reef
(terra)
(natte fumo - natte erica)

Coral Reef
(oval sunloom terra - white)
(natte fumo - natte erica)
(natte bianco)

art. 9805
lettino doppio - double sunlounger
Sunlounger doppelt - bain de soleil double

art. 9800
elemento laterale
multiservice side element
Multiservice Seiten-element
élément latéral multiservice

art. 9853
parasole - sunshade
Sonnenschirm - parasol

Coral Reef



Coral Reef
(fibre glass white)

art. 9870F tavolo - table - Tisch
(transparent glass top)

art. 9862F sedia - chair - Stuhl - chaise

art. 9852 parasole - sunshade - Sonnenschirm - parasol

RCD

Coral Reef

Coral Reef
(oval sunloom white - fibreglass white)

art. 9860 sedia - chair - Stuhl - chaise
art. 9868F tavolo - table - Tisch (HPL top)



Coral Reef



Coral Reef
(white)

art. 9860F sedia - chair - Stuhl - chaise
art. 9865F tavolo - table - Tisch (laquered glass top)

Coral Reef
(oval sunloom white)

art. 9860 sedia - chair - Stuhl - chaise





Coral Reef

Coral Reef
(oval sunloom terra)

art. 9860 sedia - chair - Stuhl - chaise



Coral Reef
(terra)

art. 9860F sedia - chair - Stuhl - chaise
art. 9865F tavolo - table - Tisch
(laquered glass top)
art. 9860 sedia - chair - Stuhl - chaise

Coral Reef



Coral Reef
(oval sunloom white)

- art. 9857
lettino - sunbed
Sonnenliege - bain de soleil
- art. 9859
tavolino - sidetable
Beistelltisch - petite table
- art. 9853
parasole - sunshade
Sonnenschirm - parasol

Coral Reef
(fibreglass terra)

art. 9862F
sedia - chair
Stuhl - chaise

art. 9854
parasole ovale
con piano d'appoggio
oval sunshade with bar shelf
Sonnenschirm oval mit Platte
parasol ovale avec
plateau réglable



Coral Reef
(fibreglass white)

art. 9862F
sedia - chair
Stuhl - chaise

art. 9854
parasole ovale
con piano d'appoggio
oval sunshade with bar shelf
Sonnenschirm oval mit Platte
parasol ovale avec
plateau réglable

Hamptons Graphics



Hamptons Graphics
(white)
(mosaic blu - kristal blu)

art. 9755
poltrona lounge - lounge armchair
lounge Sessel - Fauteuil lounge

art. 9853
parasole - sunshade
Sonnenschirm - Parasol

Hamptons Graphics



Hamptons Graphics
(white)
(mosaic blu - kristal blu - tricot blu)

art. 9755
poltrona lounge - lounge armchair
lounge Sessel - Fauteuil lounge



(coffee - nautic taupe)





Hamptons Graphics

Hamptons Graphics
(white - mosaic blu)

art. 9750
sedia - chair - Stuhl - chaise

art. 9730
tavolo - table - Tisch
(HPL top)



Hamptons Graphics

Hamptons Graphics
(white - mosaic blu)

art. 9750
sedia - chair - Stuhl - chaise

art. 9730
tavolo - table - Tisch
(HPL top)



art. 9751
sedia - chair - Stuhl - chaise
(white - nautic stripe white)





Hamptons Graphics



Hamptons Graphics
(coffee - nautic stripe taupe)

art. 9751
sedia - chair - Stuhl - chaise

art. 9727
tavolo - table - Tisch
(corten HPL top)

Hamptons Graphics



Hamptons Graphics
(coffee - nautic stripe taupe)

art. 9751
sedia - chair - Stuhl - chaise

art. 9727
tavolo - table - Tisch
(corten HPL top)





Hamptons Graphics



Hamptons Graphics
(coffee - nautic stripe taupe)

art. 9751
sedia - chair - Stuhl - chaise

art. 9727
tavolo - table - Tisch
(corten HPL top)





Hamptons Graphics
(straps coffee)

art. 9723
sedia - chair - Stuhl - chaise

art. 9724
sedia con braccioli - dining armchair
Armlehnstuhl - chaise avec accoudoirs

art. 9725
tavolo - table - Tisch (laquered glass top)



Hamptons Graphics

Hamptons Graphics
(coffee)

art. 9727
tavolo - table - Tisch
(corten HPL top)

art. 9723
sedia - chair - Stuhl - chaise



Hamptons Graphics



Hamptons Graphics
(sunweave bianco perla)

art. 9720
sedia - chair - Stuhl - chaise

art. 9721
sedia con braccioli - dining armchair
Armlehnstuhl - chaise avec accoudoirs

art. 9728
tavolo - table - Tisch (HPL top)

**Hamptons
Graphics**



Hamptons Graphics



Hamptons Graphics
(white)

(mosaic blu - kristal blu - tricot blu)

art. 9731 poltrona - armchair - Sessel - Fauteuil

art. 9732 divano - sofa - Canapé

art. 9739 tavolino - side table - Clubtisch - table basse
(laquered glass top)



Hamptons Graphics



Hamptons Graphics
(white - nautic stripe white)

art. 9733
poltrona - armchair
Sessel - Fauteuil
art. 9734
divano - sofa
Canapé
art. 9739H
tavolino - coffee table
Clubtisch - table basse
(HPL top)
art. 9735H
tavolino - coffee table - Ecktisch - table basse
(HPL top)

Hamptons Graphics



Hamptons Graphics
(white - nautic stripe white)

art. 9734
divano - Sofa - canapé

art. 9739H
tavolino - coffee table - Clubtisch - table basse
(HPL top)



Hamptons Graphics
(white - nautic stripe taupe)

art. 9733
poltrona - armchair - Sessel - fauteuil



Hamptons Graphics



Hamptons Graphics
(coffee - mosaic ocre)

art. 9733
poltrona - armchair
Sessel - Fauteuil

art. 9734
divano - sofa
Canapé

art. 9739H
tavolino - coffee table
Clubtisch - table basse
(corten HPL top)

Hamptons Graphics



Hamptons Graphics
(coffee - nautic stripe taupe)

art. 9733
poltrona - armchair
Sessel - Fauteuil

art. 9734
divano - sofa
Canapé

art. 9739H
tavolino - coffee table
Clubtisch - table basse
(corten HPL top)

art. 9735H
tavolino - coffee table
Couchtisch - table basse
(corten HPL top)



Hamptons Graphics



Hamptons Graphics
(coffee)
(brownies - noce - flowers)

art. 9731
poltrona - armchair - Sessel - fauteuil

art. 9732
divano - sofa - canapé

art. 9736
tavolino - coffee table
Couchtisch - table basse
(laquered glass top)

art. 9735
tavolino quadrato - square coffee table
Ecktisch - table basse carrée
(laquered glass top)

RCD

Hamptons Graphics



Il vero viaggio di scoperta non consiste nel cercare nuove terre, ma nell'aver nuovi occhi.

A true journey to discover new things is not a search for unexplored foreign lands, but viewing things in a new way.

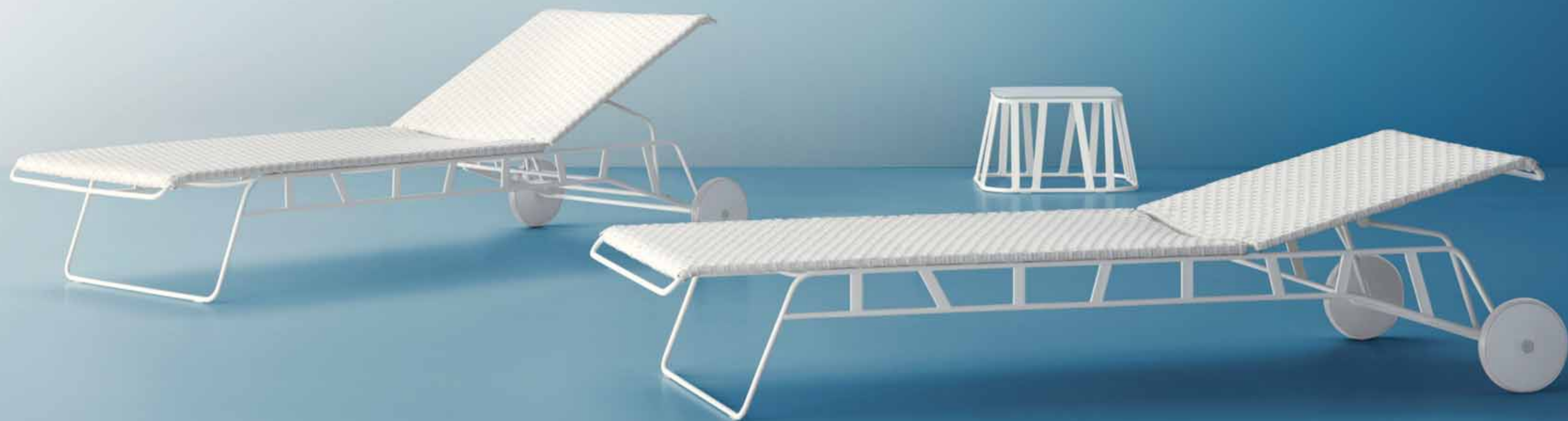
Die eigentlichen Entdeckungsreisen bestehen nicht im Kennenlernen neuer Länder, sondern darin, etwas mit anderen Augen zu sehen.

Le véritable voyage de découverte n'est pas chercher de nouvelles terres, mais porter un nouveau regard sur la vie.

Hamptons Graphics
(straps coffee)

art. 9738
lettino - sun bed
Sonnenbett - bain de soleil





Hamptons Graphics
(sunweave bianco perla)

art. 9737 lettino - sun bed - Sonnenbett - bain de soleil
art. 9739 tavolino - side table - Clubtisch - table basse
(laquered glass top)

Hamptons



Hamptons
(sunweave bianco perla)
(arancio)

- art. 9625
poltrona - armchair - Sessel - fauteuil
- art. 9626
pouff - Hocker - pouf
- art. 9627
panca - bench - Bank - banquette
- art. 9628
panca - bench - Bank - banquette
- art. 9629
vassoio - tray - Tablett - plateau

Hamptons



Hamptons
(sunweave bianco perla / musk)

art. 9625
poltrona - armchair
Sessel - fauteuil

art. 9626
pouff - Hocker - pouf

Hamptons



Hamptons



Hamptons
(sunweave bianco perla)
(natte azzurro)

art. 9614 divano-sofa-canapé

art. 9619 divano - sofa - canapé

art. 9607 tavolino - coffee table - Couchtisch - table basse



Hamptons
(sunweave bianco perla)
(natte grigio)

art. 9611
poltrona - armchair - Sessel - fauteuil

art. 9613
divano - sofa - canapé

art. 9607
tavolino - coffee table - Couchtisch - table basse
(laquered glass top)



Hamptons
(sunweave bianco perla)
(natte bianco)

art. 9620 divano ad angolo - corner sofa - Rundeck sofa - canapé d'angle
art. 9607 tavolino - coffee table - Couchtisch - table basse





Hamptons



Hamptons
(sunweave musk)
(tortora)

- art. 9616 divano ad angolo - corner sofa
Rundeck Sofa - canapé d'angle
- art. 9607 tavolino - coffee table
Couchtisch - table basse
- art. 9608 pouff - Hocker - pouf



Hamptons



Hamptons
(sunweave musk)
(tortora)

- art. 9611 poltrona - armchair - Sessel - fauteuil
- art. 9616 divano ad angolo - corner sofa - Runderk sofa
canapé d'angle
- art. 9607 tavolino - coffee table - Couchtisch - table basse
- art. 9610 lounge con tavolino - lounge with ring table
lounge mit ring Couchtisch - lounge avec table ring



Hamptons



Hamptons
(sunweave musk)
(tortora)

art. 9613 divano - sofa - canapé
art. 9607 tavolino - coffee table
Couchtisch - table basse



Samba Rio



Samba Rio
(terra - batyline)

art. 9588 lettino - sun bed - Sonnenliege - bain de soleil
art. 9853 parasole - sunshade - Sonnenschirm - parasol
art. 9859 tavolino - sidetable - Beistelltisch - petite table

Samba Rio



Samba Rio
(terra)

art. 9589
lettino - sun bed
Sonnenliege - bain de soleil



art. 9588
lettino - sun bed - Sonnenliege - bain de soleil

art. 9859
tavolino - side table - Beistelltisch - petite table
(fibreglass top)



Samba Rio



Samba Rio
(terra)

art. 9587
chaise-longue





Samba Rio



Samba Rio
(aluminum)

art. 9586
base tavolo - table base - Tisch gestell - base table

art. 9687
piano - top - Tisch platte - plateau
(HPL top)

Hamptons Graphics
(sunweave white)

art. 9721
sedia - chair - Stuhl - chaise





Samba Rio
(aluminum)

art. 9586
base tavolo - table base - Tisch gestell - base table

art. 9686
piano - top - Tisch platte - plateau
(HPL top)

Samba Rio

Compact Ivory
HPL top

- art. 9681 cm. 60
- art. 9682 cm. 70
- art. 9683 cm. 80
- art. 9687 cm. 100

- art. 9684 cm. 60x60
- art. 9685 cm. 70x70
- art. 9686 cm. 80x80
- art. 9690 cm. 90x90
- art. 9699 cm. 100x100



Topalit carrara bianco
Compact outdoor top

- art. 9661 cm. 60
- art. 9662 cm. 70
- art. 9663 cm. 80

- art. 9664 cm. 60x60
- art. 9665 cm. 70x70
- art. 9667 cm. 80x80
- art. 9670 cm. 90x90



Topalit bianco
Compact outdoor top

- art. 9651 cm. 60
- art. 9652 cm. 70
- art. 9653 cm. 80
- art. 9654 cm. 90

- art. 9656 cm. 60x60
- art. 9657 cm. 70x70
- art. 9658 cm. 80x80
- art. 9659 cm. 90x90

Caribe

Esistono emozioni che segnano una vita, immagini inedite che possono essere raccontate, vissute e rivissute.

There are feelings that make their mark on your life, and brand-new images that can be described, experienced and experienced again and again.

Es gibt Emotionen, die man nie vergisst. Neue Eindrücke, die erzählt, erlebt und erinnert werden können.

Il existe des émotions que l'on ne peut oublier, des images inédites à raconter, vivre et revivre.



Caribe
(sunloom chocolate)
(noce)

art. 9578 chaise-longue



St. Tropez

**Un uomo viaggia per il mondo
alla ricerca di ciò che gli serve e torna
a casa per scoprirlo.**

A man travels the world in search of what he needs,
but returns home to obtain it.

Wir bereisen die Welt auf der Suche nach dem, was
uns dienlich sein kann und kehren nach Hause zurück,
um es zu entdecken.

Un homme peut voyager à travers le monde à la
quête de ce qu'il lui faut et retourner chez lui pour
enfin le découvrir.



St. Tropez
(sunloom chocolate)
(bianco - gianduia)

art. 9575 poltrona - armchair - Sessel - fauteuil

art. 9579 divano - large sofa - grand canapé

art. 9577 vela parasole - sun protection

Sonnensegel - toile parasol

art. 9557 tavolino - coffee table

Couchtisch - table basse

(laquered glass top)



St. Tropez



St. Tropez
(sunloom chocolate)
(bianco - noce)

- art. 9575 poltrona - armchair - Sessel - fauteuil
- art. 9579 divano - large sofa - grand canapé
- art. 9577 vela parasole - sun protection
Sonnensegel - toile parasol
- art. 9557 tavolino - coffee table
Couchtisch - table basse
(laquered glass top)



St. Tropez



St. Tropez
(sunloom chocolate)
(bianco)

- art. 9568 lettino con parasole - sun bed with sun protection
Sonnenliege mit sonnensegel - bain de soleil avec toile parasol
- art. 9579 divano - large sofa - grand canapé
- art. 9577 vela parasole - sun protection
Sonnensegel - toile parasol
- art. 9557 tavolino - coffee table - Couchtisch - table basse



St. Tropez

Ci sono luoghi in cui si va per il piacere di andare e luoghi che catturano l'attenzione quando hai la fortuna di sfiorarli. E poi ci sono luoghi che ti rimangono nel cuore per un motivo che non sai spiegare.

There are places where you go for the simple pleasure of getting there, and there are places that capture your attention when you're lucky enough to pass nearby. And then there are places that remain in your heart for reasons you can't explain.

Es gibt Orte, die wir bereisen, weil sie uns gefallen und Orte, die unsere Aufmerksamkeit erwecken, wenn wir das Glück haben, sie rein zufällig zu entdecken. Es gibt aber auch Orte, an die wir unser Herz verlieren, ohne erklären zu können warum.

Il y a des endroits que l'on visite pour le plaisir d'un voyage et des endroits qui nous captivent quand on les découvre par hasard. Et il y a des endroits qui restent au fond de l'âme sans que l'on puisse en connaître la raison.



St. Tropez
(sunloom chocolate)
(bianco)

art. 9568 lettino con parasole - sun bed with sun protection - Sonnenliege mit Sonnensegel
bain de soleil avec toile parasol
art. 9557 tavolino - coffee table
Couchtisch - table basse

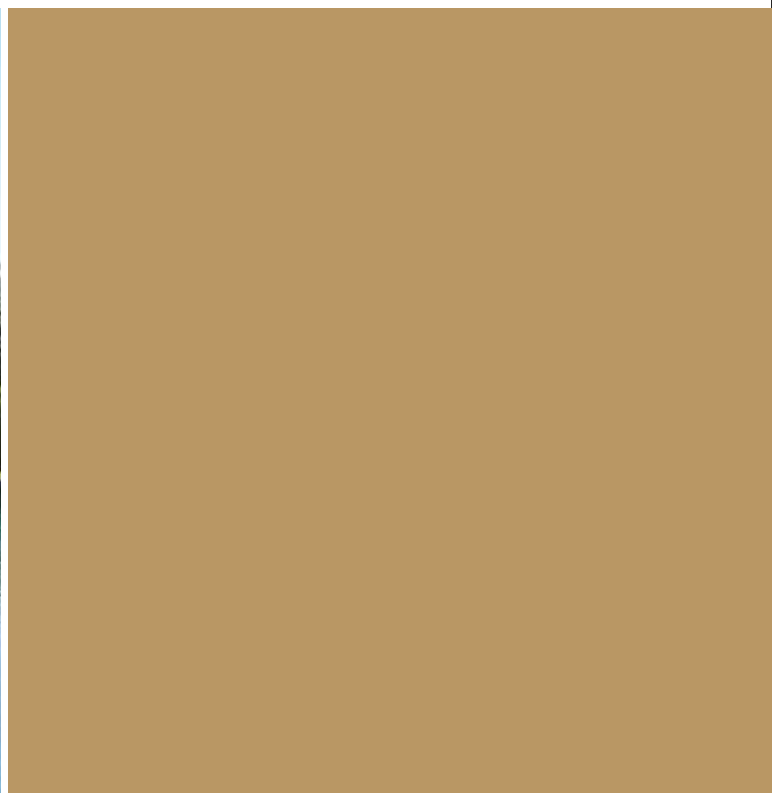


St. Tropez



St. Tropez
(sunloom chocolate)

- art. 9570 chaise-longue
- art. 9571 pouff - Hocker - pouf
- art. 9573 tavolino - coffee table
- Couchtisch - table basse
(transparent glass top)
- art. 9572 pouff - Hocker - pouf



St. Tropez



St. Tropez
(sunloom chocolate)

- art. 9541 poltroncina - dining armchair
Armlehnstuhl - chaise avec accoudoirs
- art. 9544 tavolo - table - Tisch
(laquered glass top)
- art. 9543 poltrona - armchair - Sessel - fauteuil



St. Tropez



St. Tropez
(sunloom chocolate)

- art. 9541 poltroncina - dining armchair
Armlehnstuhl - chaise avec accoudoirs
- art. 9542 tavolo - table- Tisch
(laquered glass top)
- art. 9540 sedia - chair - Stuhl - chaise



Igloo



Igloo
(sunweave bianco perla)
(bianco - azzurro)

art. 9631 divano - sun nest
art. 9634 tavolino - coffee table - Couchtisch - table basse
(laquered glass top)





Igloo

Viaggiare è avere una stella davanti a sé ed una strada da percorrere. Non importa che la stella sia irraggiungibile, l'importante è camminare e farsi possedere dal viaggio.

Traveling is like having a star in your sights and a road to travel. It doesn't matter that the star can't be reached. What's important is to move forward and let your journey take control of your soul.

Reisen bedeutet einen Stern vor sich zu haben und einem Weg zu folgen. Es ist nicht von Bedeutung, dass der Stern unerreichbar ist, wichtig ist allein, voranzugehen und sich von der Reise verzaubern zu lassen.

Voyager est suivre une étoile, avoir une route à parcourir. Qu'importe si l'étoile est inaccessible, l'important est de progresser et vivre le voyage.



Igloo

(sunweave bianco perla)
(bianco - azzurro)

art. 9631 divano - sun nest
art. 9632 lounge



Les Iles



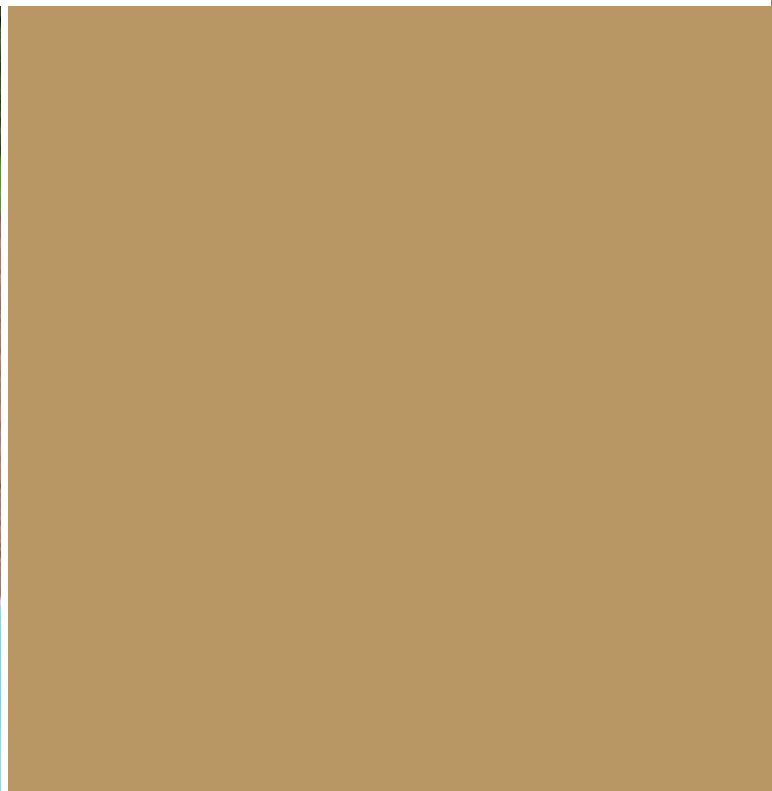
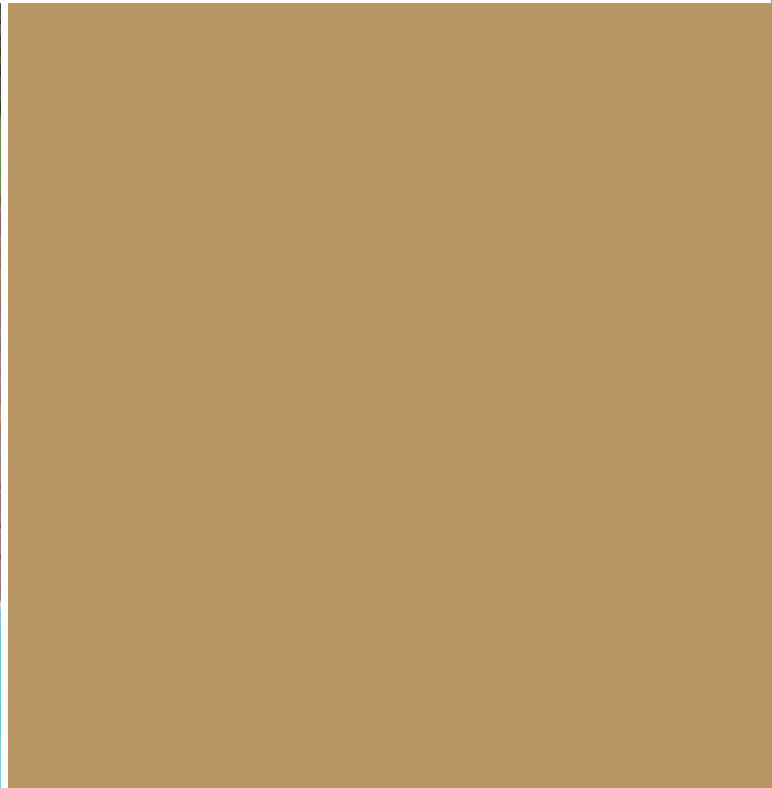
Les Iles
(sunweave cacao)
(bianco - azzurro)

art. 9592 lounge
art. 9594 lazy lounge
art. 9596 pouff rotondo - round pouff
Hocker rund - pouf rond
art. 9597 tavolino ovale - oval coffee table
Couchtisch oval - petite table oval



Les Iles
(sunweave cacao)
(bianco - azzurro)

art. 9591 divano - sofa - canapé
art. 9593 divano - lazy sofa
art. 9596 pouff rotondo - round pouff
Hocker rund - pouf rond
art. 9598 pouff ovale - oval pouff
Hocker oval - pouf oval
art. 9595 tavolino rotondo - round coffee table
Couchtisch rund - petite table ronde

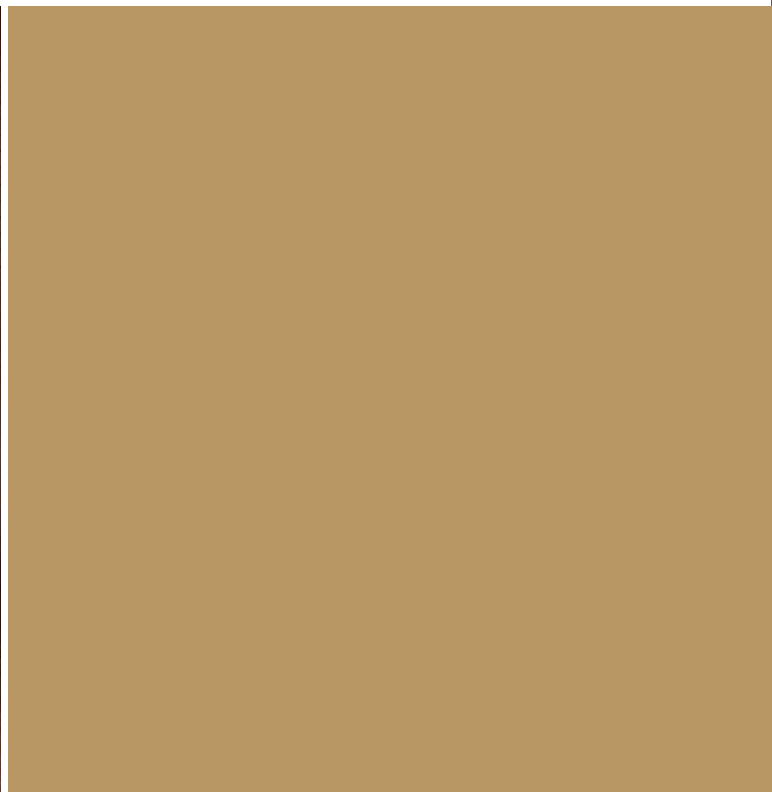
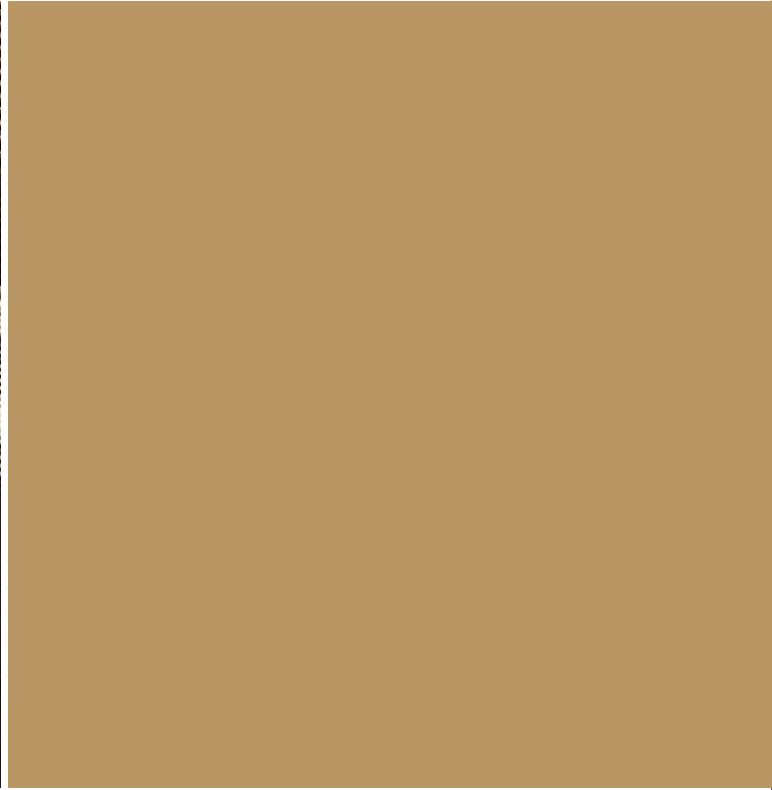


Les Iles



Les Iles
(sunweave cacao)
(black)

art. 9591 divano - sofa - canapé
art. 9593 divano - lazy sofa
art. 9596 pouff rotondo - round pouff -
Hocker rund - pouf rond



Coconut



Coconut
(sunweave cacao)
(bianco)

art. 9581 poltrona - armchair - Sessel - fauteuil
art. 9582 divano - Sofa - canapé
art. 9584 pouff - Hocker - pouf
art. 9585 tavolino - coffee table
Couchtisch - table basse
(transparent glass top)



Papaya



Papaya



Papaya
(sunweave bianco perla)

art. 9530 sedia - chair - Stuhl - chaise
art. 9532 poltroncina - armchair - Armlehnstuhl - fauteuil
art. 9535 tavolino - table - Tisch
(laquered glass top)





Papaya



Papaya
(sunweave moka)
(bianco)

art. 9531 sedia - chair - Stuhl - chaise
art. 9507B tavolo - table - Tisch (synthetic top)

Papaya



136 - 137



Papaya
(sunweave moka)

- art. 9530 sedia - chair - Stuhl - chaise
- art. 9535 tavolino - table - Tisch
(laquered glass top)
- art. 9531 sedia con braccioli - dining armchair
Armlehnstuhl - chaise avec accoudoirs
- art. 9537 tavolo - table - Tisch
(laquered glass top)

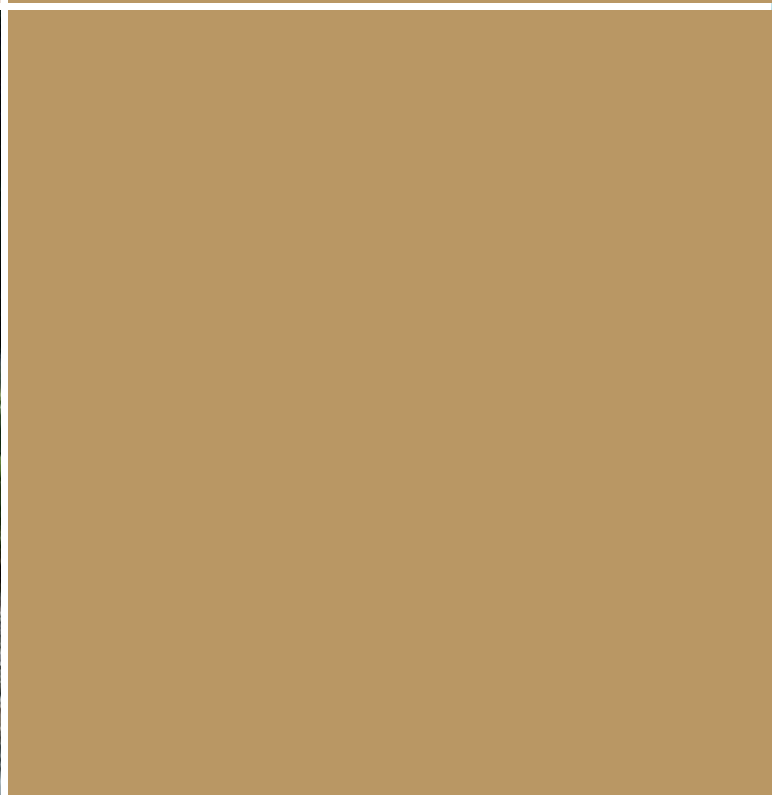
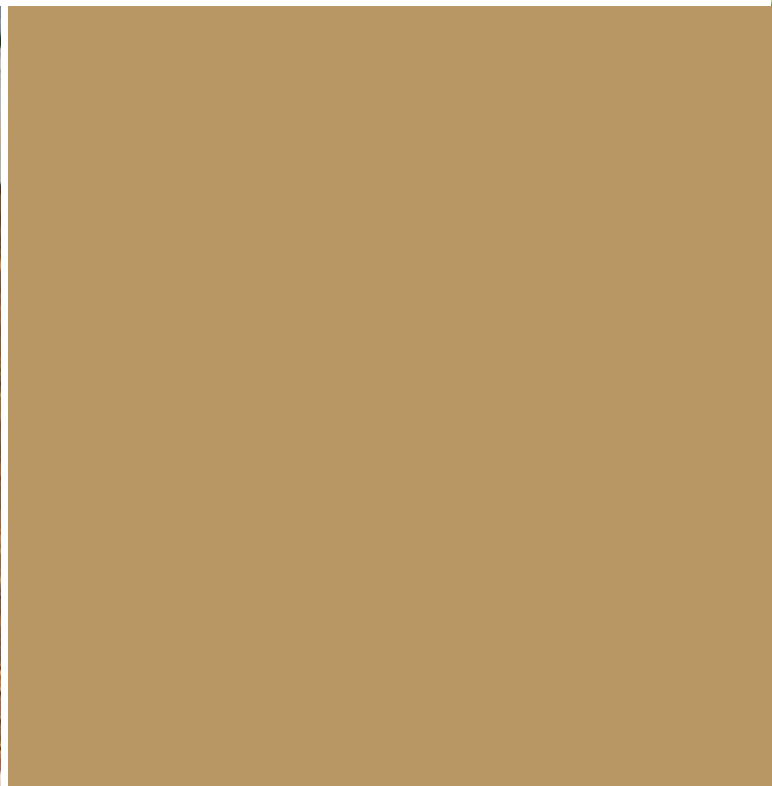


Papaya



Papaya Classic
(sunweave moka)
(avana - noce)

art. 9533 poltrona - armchair - Sessel - fauteuil
art. 9534 divano - sofa - canapé
art. 9538 tavolino - coffee table
Couchtisch - table basse



Papaya



Papaya
(sunweave bianco perla)

art. 9533 poltrona - armchair - Sessel - fauteuil

art. 9534 divano - sofa - canapé

art. 9538 tavolino - coffee table - Couchtisch - table basse



Samba



Samba
(sunweave bianco perla / apricot)

art. 9524 chaise-longue



Samba

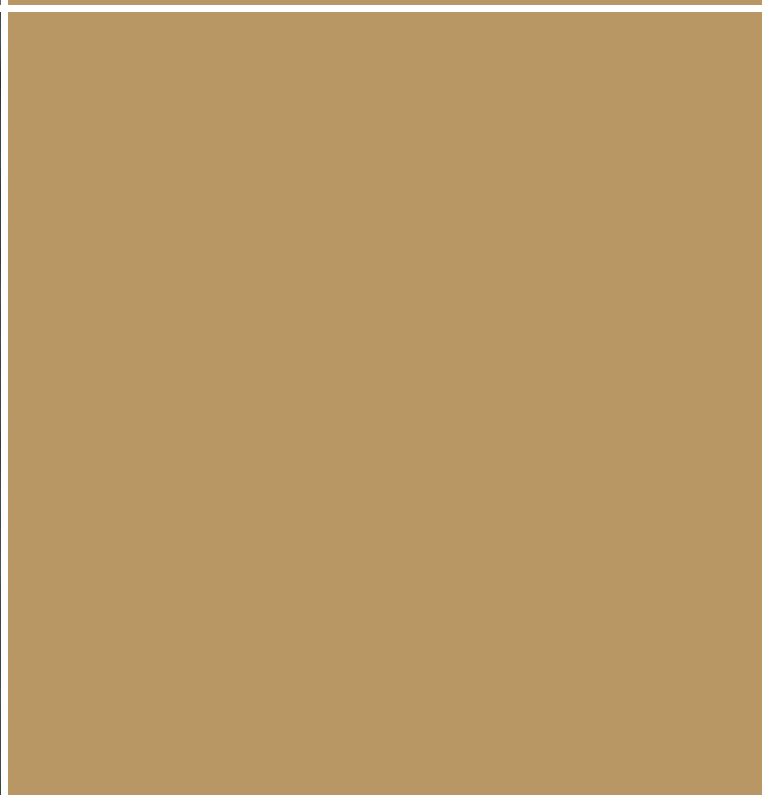
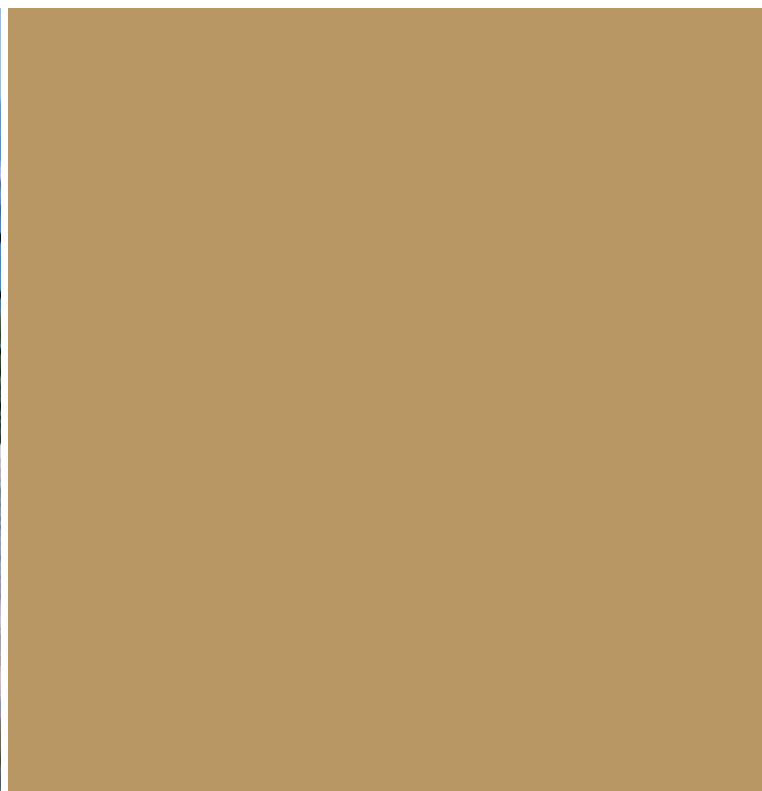


Samba

(sunweave apricot / bianco perla)



art. 9525 lettino - sun bed - Sonnenliege - bain de soleil
art. 9526 tavolino - coffee table - Couchtisch - petite table
(teak top)



Samba



art. 9522
tavolo - table - Tisch
(teak)



art. 9520
sedia - chair - Stuhl - chaise



Samba
(sunweave moka)

art. 9521 sedia con braccioli
dining armchair
Armlehnstuhl
chaise avec accoudoirs
art. 9527 tavolo allungabile
extending table
Esstisch ausziehbar
table à rallonge (teak)

contract Greenfield

Italia

Agriturismo Tenuta di Montemassi - Montemassi (GR)
Alpenrose - Laives (BZ)
Anthurium Motel srl - Santo Stefano al Mare (IM)
Antiche Terme - Grado (GO)
Avalon Wellness center - Sgonico (TS)
Azienda Agricola Celesia Lorenza - Capalbio (GR)
Bar Caffè Adler - Bolzano
Bar Pasticceria Sajeva - Agrigento
Barcadero - Salo' (BS)
Café I 13 - Casteldaccia (PA)
Caffè Villa Frainela - Selva di Val Gardena (BZ)
Club Relais Hpp - Caluso (TO)
CO.BA' beach restaurant - Porto San Giorgio (FM)
Gaudi Wine & Restaurant - Jesolo Lido (VE)
Gran Bar Park Palace - Lignano Pineta (UD)
Hotel Arnika - Passo San Pellegrino (TN)
Hotel Brunner Hof - Chiusa (BZ)
Hotel Byron Bellavista - Jesolo Lido (VE)
Hotel Erika - San Vigilio (TN)
Hotel Gran Palace - Merano (BZ)
Hotel Gritti Palace - Venezia
Hotel Nevada - Tarvisio (UD)
Hotel Sonnwies - Luson (BZ)
Kallikoros Hotel Spa Resort - Noto (SR)
L&H Lifestyle - Brenzone - Lago di Garda (VR)
La Fenice Bar - Grado (GO)
La Torrefazione - Feltre (BL)
Locanda del Sant'Uffizio - Cioccaro di Penango (AT)
Maso Botes - Varignano di Arco (TN)
Park Hotel Pineta Residence - Eraclea (VE)
Podere San Sanino - Torrita di Siena
Quid Best Western Hotel Hnh - Trento Nord
Residence Capo Nord - Aprilia Marittima (UD)
Residence Corte del Mare - Aprilia Marittima (UD)
Ristorante Cial de Brent - Polcenigo (PN)
Ristorante Il Tamburello - Castelfranco (VE)
Ristorante Pizzeria Zi Gaetana - Roma
Savoy Beach Hotel - Bibione (VE)
Sesto Senso - San Fior (TV)
Terme di Chianciano spa - Chianciano (SI)
Tre Merli Beach Hotel - Trieste
Zerouno Steak House - Arcene (BG)

Africa

Sheraton Hotel - Addis Ababa - Ethiopia

Austria

Aqua Dome Tirol Therme - Längenfeld
Burgenlandresort und Golf Hotel - Tatz Tatzmannsdorf
Heiltherme Bad Waltersdorf - Bad Waltersdorf
Hotel Alpenrose - Elbingenalp
Hotel Austria Alpine Resort - Fieberbrunn
Hotel Gassner - Neukirchen a.Grossvenediger
Hotel Thermenhof Paierl - Bad Waltersdorf
Hotel und Spa Larimar - Stegersbach
Hotel Winzer - St. Georgen im Attergau (Salzkammergut)
Laguna Thermen - Geinberg

Landzeit Autobahn-Restaurants - (Net-Austria)
Römerbad Thermen - Bad Kleinkirchheim
Schlosshotel Obermayernhofen - Sebersdorf

Bulgaria

Hotel Kempinski Grand Arena - Bansko

Cyprus

Calypso Hotel - Paphos
Holiday Villas - Paphos

Croatia

Berkeley Hotel - Dubrovnik
Hotel San Fior - Rabac Istra
Hotel Luna - Porec Istra
Hotel Sol Coral - Umag
Hotel Tamaris - Porec
Hotel Meteor - Rovinj
Hotel Albatros - Porec
Hotel Riviera - Porec

Denmark

Hotel Adina - Copenhagen

France

Grand Hotel du Domaine de Divonne - Divonne
Les Chalets du Soleil - Val Thorens
Hotel du Domaine les Terrasses du Bailli - Le Rayon Canadel
Office de Tourisme - St. Cyprien

Germany

Aspria Club - Uhlenhorst-Hamburg
Auebad - Kassel
Häcker's Grand Hotel - Bad Ems
Haus Meeresrauschen - Insel Rügen
Haus Meeresbrise - Insel Rügen
Hotel Birkenhof - Neunburg v.Wald
Hotel Fürstenhof - Bad Bertrich
Hotel Meerlust - Ostseebad Zingst
Hotel Rübezahl - Schwangau-Horn
Hotel zur Post - Lohfelden
Mineralbad Leutze - Stuttgart
Seehotel Binztherme - Ostseebad Binz
Swisshotel Neuss - Neuss
Thermen Hotel - Bad Kissling
Westin - Leipzig

Greece

Hotel Glicorisa Beach - Pythagorio - Samos
Restaurant AMI - Loutraki
Ristorante Paradiso - Halandri
Hotel Orion - Santorini
Hotel Antinea - Santorini
Hotel Nefels - Santorini
Restaurant Ami - Korinthos
Restaurants Pizza Hut - Athens / Net

Hungary

Grand Hotel Anna - Balatonfured
Sydney Hotel Apt - Budapest
Le Grand Cafeteria - Budapest

Morocco

I 6 Café Restaurant Glacier - Marrakech

Portugal

Hotel Dona Ines - Coimbra

Russia

Restaurant Il Pittore - Moscow

Slovakia

Crowne Plaza Hotel - Bratislava
Camouflage Restaurant - Bratislava

Slovenja

Rimske Therme - Rimske

Spain

Hotel Abama - Guia de Isora - Tenerife
Hotel Reserva del Higuero - Benalmadena - Malaga
Club del Golf Fuente Del Alamo - Fuente del Alamo-Murcia

Switzerland

Hotel Touring - Naters
Unique Hotel Dom - Saas-Fee
Solbadhotel - Sigriswil

United Kingdom

The Scarlet Hotel - Newquay, Cornwall

U.A.E

Pullmann Hotel - Dubai
Jal Tower Hotel / Restaurant - Dubai

U.S.A.

Fairmont Hotel Maui - Hawaii
Hotel Radisson - Yuma, Texas
Hotel Sheraton Waikiki - Hawaii
Sonesta Hotel - Coral Gables, Flo.
The Royal Hawaiian Waikiki - Hawaii
The Wit - Chicago, Mi.

Cruiseships

Seabourn Legend
Seabourn Odyssey
Seabourn Pride
MV Oosterdam
MZ Zuiderdam -
MV Niew Amsterdam
Queen Mary 2 - Carnival Cruise Line, Winter Garden
Flußshif Scenic Diamond



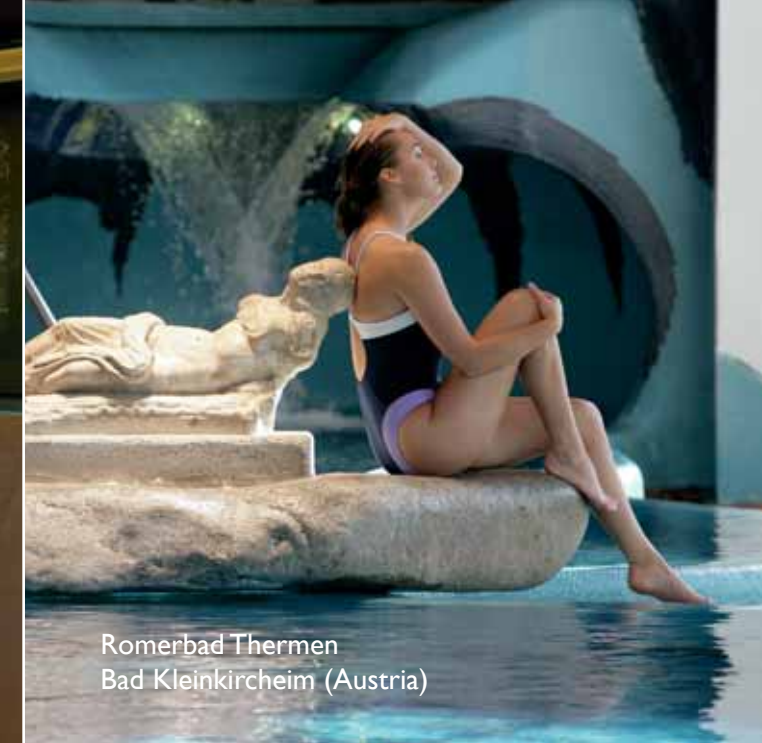
contract



Residence
California (U.S.A)



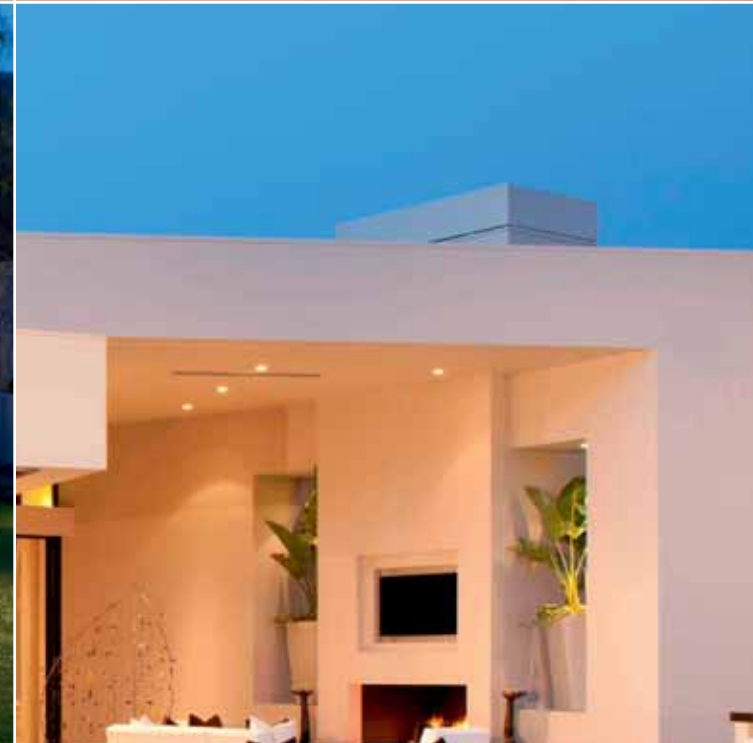
Locanda del Sant'Uffizio
Cioccaro di Penango (AT)



Romerbad Thermen
Bad Kleinkirchheim (Austria)



Residence
California (U.S.A)



Locanda del Sant'Uffizio
Cioccaro di Penango (AT)

wellness

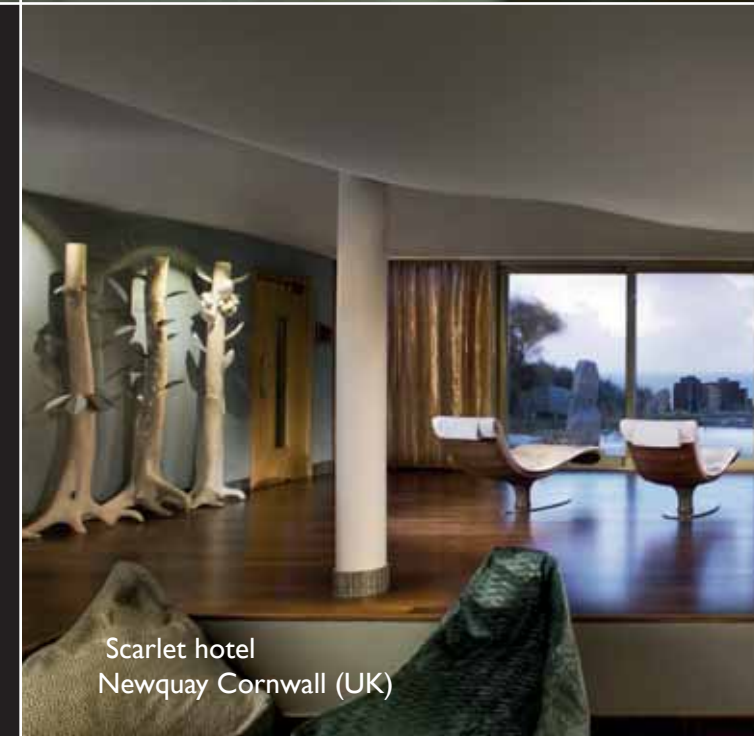
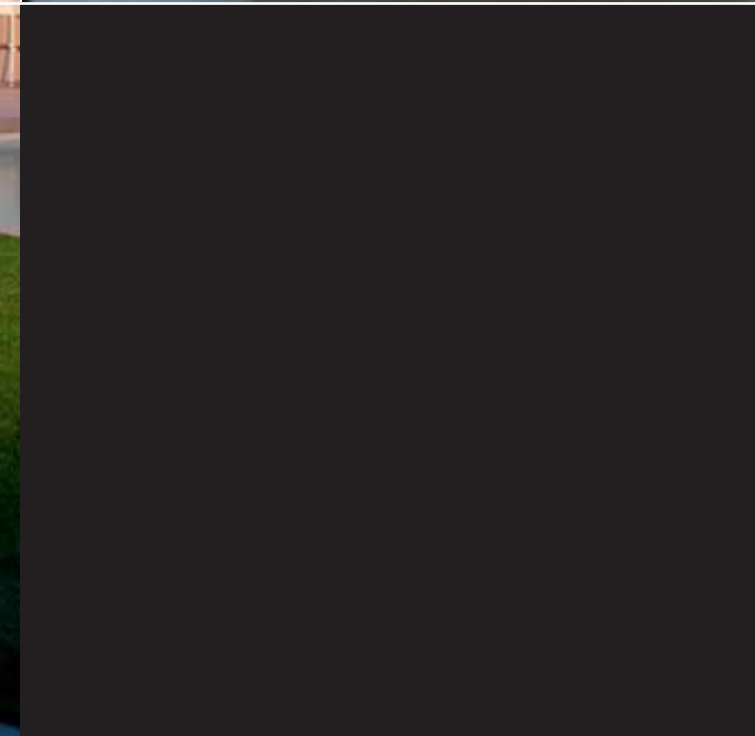


Hotel Abama
Guia de Isora (Tenerife)

150 - 151



Residence
California (U.S.A)



Scarlet hotel
Newquay Cornwall (UK)



technical data

Tutte le strutture sono realizzate in alluminio e/o acciaio trattato con vernici epossidiche, a garanzia di leggerezza, resistenza agli agenti atmosferici e durata.

Per gli intrecci si utilizzano il SunWeave ed il Sunloom (fili di polietilene) in diverse finiture; SunWeave e Sunloom sono filamenti testati SGS. Le sedie ed il lettino da sole HAMPTON GRAPHICS sono disponibili anche con STRAPS in pvc intrecciate. Le STRAPS sono resistenti agli agenti atmosferici.

La combinazione alluminio+SunWeave Sunloom è garanzia di durata nel tempo sia nella casa che in ambienti pubblici, all'interno ed all'esterno. Il SunWeave ed il Sunloom sono resistenti al caldo, al freddo (+/- 50°), all'acqua ed alla salsedine oltre che ai raggi UV.

La loro manutenzione è semplicissima: è sufficiente lavare le parti intrecciate con acqua e sapone neutro ed una spazzola leggera. Per tutte le parti metalliche ed i basamenti dei tavoli è sufficiente pulire con un panno umido ed asciugare evitando l'uso di detergenti aggressivi o solventi. Si raccomanda di non strisciare i basamenti bensì di sollevarli, per evitare la rottura dei piedini.

Per una più lunga durata dei piani in Teak ed in Iroko si consiglia di applicare (almeno una volta all'anno) sulla superficie pulita ed asciutta un olio protettivo (normalmente in commercio). Il legno di Teak usato è originario di coltivazioni selezionate e rigorosamente controllate da parte degli organismi locali a garanzia di protezione del patrimonio forestale.

La durata dei singoli filamenti di polietilene (SunWeave e Sunloom) è subordinata ad un corretto utilizzo dei mobili; si declina ogni responsabilità per danni derivanti uso improprio ed atti vandalici.

Roberti si riserva la facoltà di apportare modifiche o migliorie senza alcun preavviso.

All the structures are in aluminium and/or stainless steel treated with epoxy paints to ensure lightness, resistance to atmospheric agents and durability.

SunWeave and Sunloom (polyethylene fibres) in different finishes have been used for the weaves; SunWeave and Sunloom are SGS tested materials. Chairs and sunbed HAMPTONS GRAPHICS are available also with woven STRAPS in pvc. STRAPS are weather-resistant.

Aluminium+SunWeave and Sunloom ensure long-term reliability both for residential and contract use, inside and outside. SunWeave and Sunloom withstand heat, cold (+/-50°), water and sea spray as well as ultraviolet rays.

The maintenance is very easy: just wash the woven parts with neutral soap and water using a light brush. For all aluminium parts and tables bases clean with a damp cloth and dry. Do not use aggressive detergents or solvents. Do not drag the table bases but lift them to avoid the loss of feet.

To preserve the original beauty of the teak and iroko tops, a protective oil (easy to find) should be applied on the clean and dry surface at least once a year. The teak wood used comes from selected plantations that have been checked by local authorities in order to protect natural forests.

The durability of each single polyethylene thread is subject to proper use of the furniture; we deny any responsibility for damages caused by improper use.

Roberti reserves the right to modify or upgrade the product without prior notice.

Alle strukturen bestehen aus Aluminium und/oder Stahl mit Epoxylackierung, die Leichtigkeit, Widerstandsfähigkeit gegen Witterungseinflüsse und Langlebigkeit garantiert.

Für das Flechtwerk werden die Materialien SunWeave und Sunloom (Polyethylenschnüre) in verschiedenen Ausführungen verwendet; SunWeave und Sunloom sind SGS getestet. Stühle und Sonnenliege HAMPTONS GRAPHICS sind auch in der Version mit geflochtenen pvc-STRAPS vorgesehen. STRAPS sind für Outdoor geeignet.

Die Kombination Aluminium + SunWeave / Sunloom ist eine Garantie für Langlebigkeit im Haus wie auch im Objekt-Außenbereich. SunWeave und Sunloom sind beständig gegen Hitze und Kälte (+/- 50°), Wasser und Salzlückstände, wie auch gegen UV-Strahlen.

Die Pflege ist absolut leicht: einfach die geflochtene Teile mit Wasser, neutraler Seife und einer weichen Bürste reinigen. Für die Tischgestelle einfach reinigen mit einem feuchten Tuch und sofort trocknen. Die Verwendung von aggressive Reinigungs- bzw. -Lösungsmittel ist absolut zu vermeiden. Wir empfehlen, die Tischgestellen nicht zu schleppen, sondern sie aufzuheben, um der Beschädigung der Gleiter zu vermeiden.

Für eine Langlebigkeit der Teak- und Iroko Holzplatte empfehlen wir, wenigstens einmal pro Jahr, die saubere und trockene Patten mit einem Schutzöl zu behandeln. Wir verwenden ausschließlich Teak-Holz aus ausgewählten und von den örtlichen Behörden streng kontrollierten Anbaugebieten.

Die Langlebigkeit der Polyethylenschnüre ist mit einer ordentlichen Verwendung der Möbel verbunden; wir lehnen jegliche Verantwortung für missbräuchliche Verwendung ab.

Roberti behält sich das Recht vor, ohne jegliche Benachrichtigung, Änderungen oder Produktverbesserungen vorzunehmen

Toutes les structures sont en aluminium et/ou en acier traité avec des vernis à base époxyde, en garantissant légèreté, résistance aux agents atmosphériques ainsi que durabilité.

Pour les tressages on utilise le SunWeave et le Sunloom (fil de polyethylene) en différentes finitions; SunWeave et Sunloom sont testés SGS. Les chaises et le bain de soleil HAMPTONS GRAPHICS sont disponibles aussi dans le tressage de STRAPS en pvc. Les STRAPS sont imperméable et peuvent rester dehors.

La combinaison aluminium+SunWeave et Sunloom est garantie d'une longue durée aussi bien à l'intérieur que à l'extérieur. Le SunWeave et le Sunloom sont résistantes à l'eau, à la chaleur, au froid (+/-50°) et à la salure ainsi-que aux rayons UV.

L'entretien est très simple: il faut laver les tressages avec de l'eau et savon neutre en utilisant une brosse souple. Pour les parties en aluminium et les piétements des tables, nous conseillons le nettoyage avec un chiffon humide; essuyer tout de suite et éviter l'utilisation de détergents agressifs ou de solvants. On recommande aussi de ne pas trainer les piétements des tables, mais de les soulever afin d'éviter la perte des patins.

Pour une longue durée des plateaux des tables en bois de teak ou iroko nous conseillons de traiter leurs surface sèche et propre, avec de l'huile de protection (une fois par an). Le bois de teak utilisé est originaire des cultures sélectionnées et strictement contrôlées de la part des organismes locaux afin de protéger la richesse en forêts.

La durée des fils en polyethylene est liée à une utilisation correcte du mobilier; nous déclinons toute responsabilité pour dégâts provoqués par une mauvaise utilisation.

Roberti se réserve la faculté d'apporter des modifications ou améliorations aux produits sans aucun préavis.



wovens



Oval Sunloom White
(Coral Reef Collection)



Sunweave Bianco Perla
(Samba, Papaya, Igloo Collections)



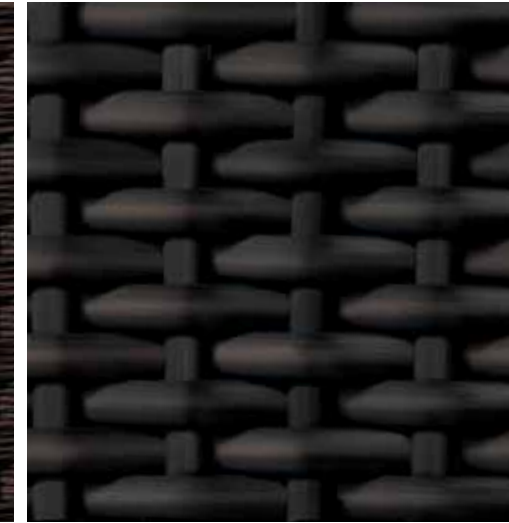
Sunweave Bianco Perla
(Hamptons - Hamptons Graphics Collections)



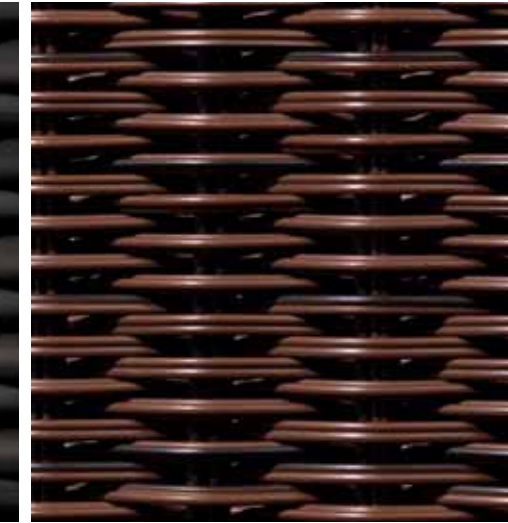
Sunweave Musk
(Hamptons Collection)



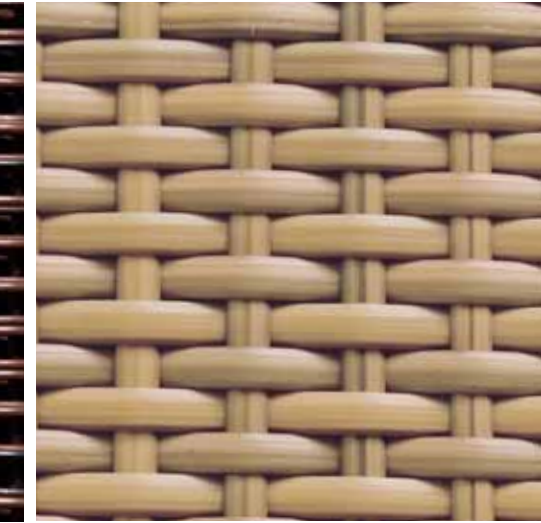
Sunloom Chocolate
(Saint Tropez - Caribe Collections)



Sunweave Moka
(Samba & Papaya Collections)



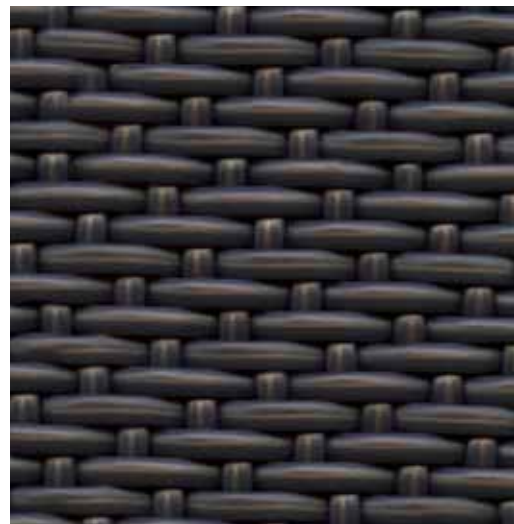
Sunweave Cacao
(Les Iles - Coconut Collections)



Sunweave Apricot
(Samba Collection)

paints

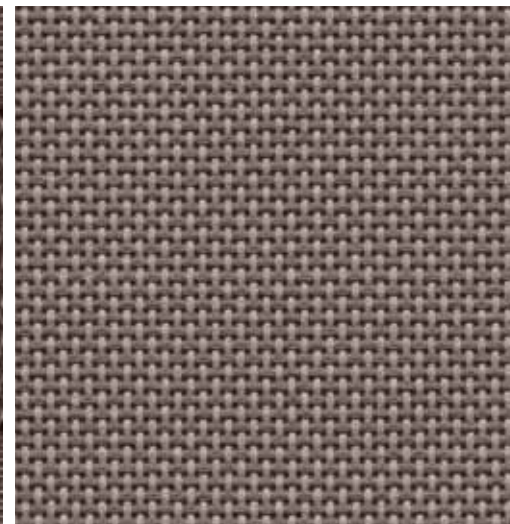
Oval Sunloom Terra
(Coral Reef Collection)



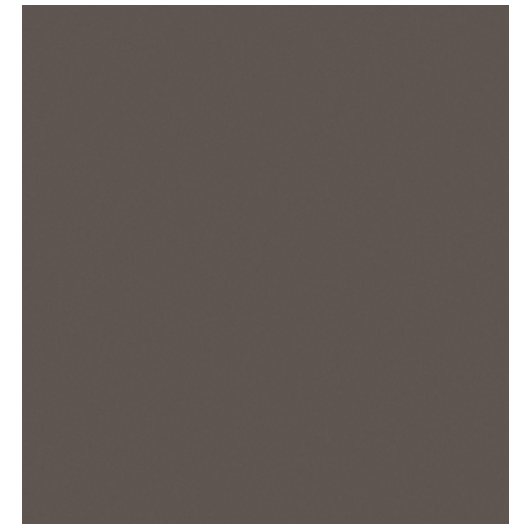
Straps Coffee
(Hamptons Graphics Collection)



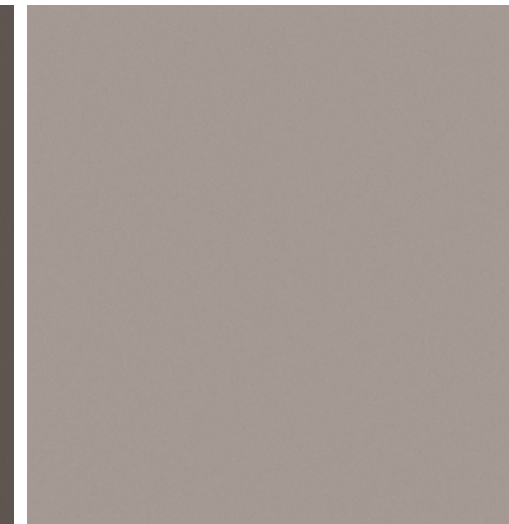
Batyline (pl/pvc/ca)
(Samba Rio Collection)



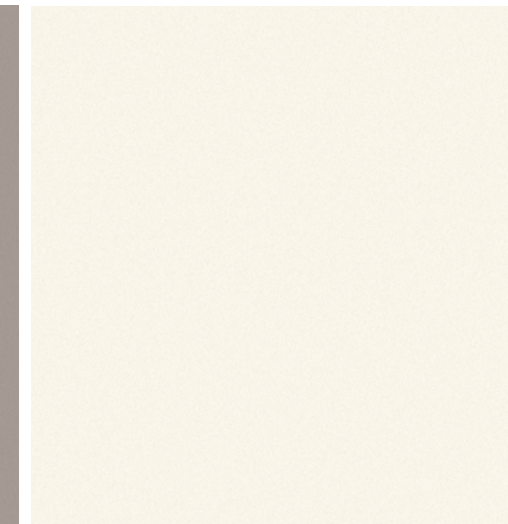
Terra
(Coral Reef)



Corda
(Coral Reef only option)



White
(Coral Reef - Hamptons Graphics)



Coffee
(Hamptons Graphics)



thefabrics



TESSUTI – Roberti propone una vasta gamma di tessuti adatti all'uso esterno con caratteristiche diverse. Tutti hanno un'alta resistenza ai raggi UV. Sono compresi in 4 categorie di prezzo.

GRUPPO A – propone un'ampia scelta di tessuti adatti ad un uso interno ed esterno abbinati a imbottiture in poliuretano espanso consigliate per aree coperte (in/out) o protette.

GRUPPO AI – propone una vasta gamma di tessuti adatti ad un uso interno ed esterno abbinati a imbottiture in poliuretano espanso rivestite con tela in poliestere verniciato ad acqua: sono idrorepellenti. I cuscini morbidi degli schienali e i piccoli cuscini decorativi contengono un mix di chips di poliuretano a cellula aperta e fibre naturali che consentono un drenaggio dell'acqua e una veloce asciugatura ad evitare la formazione di muffe. E' questa la proposta ideale di cuscino per l'esterno ove si unisce il comfort di un tessuto alla garanzia di resistenza dell'imbottitura. Per una migliore asciugatura sarà sufficiente aprire le zip delle federe e lasciar asciugare all'aria.

GRUPPO BI – i tessuti proposti dalla categoria BI , composti da PVC, Poliestere e Poliuretano, sono idrorepellenti. Vi possono essere infiltrazioni d'acqua dalle cuciture, ma poiché essi sono abbinati a imbottiture per esterno la resistenza all'acqua è pressoché garantita. Le imbottiture sono in poliuretano espanso rivestite con tela in poliestere verniciato ad acqua. I tessuti del gruppo BI sono disponibili solo per alcuni modelli della collezione come specificato nel listino prezzi.

GRUPPO CI – i tessuti proposti dalla categoria CI , composti da PVC, Poliestere e Poliuretano, hanno una leggera imbottitura in poliestere fissata con termosaldatura a righe orizzontali. Sono idrorepellenti. Vi possono essere infiltrazioni d'acqua dalle cuciture, ma poiché essi sono abbinati a imbottiture per esterno la resistenza all'acqua è pressoché garantita. Le imbottiture sono in poliuretano espanso rivestite con tela in poliestere verniciato ad acqua. I tessuti del gruppo CI sono disponibili solo per alcuni modelli della collezione come specificato nel listino prezzi.

Tutti i tessuti delle categorie A e AI possono essere lavati a mano, in acqua fredda (max. 30°C) ed asciugati all'aria. I tessuti delle categorie BI e CI devono essere periodicamente puliti con panno umido e leggero detergente neutro. Eventuali macchie vanno pulite prontamente per evitare che si stabilizzino.

Ulteriori istruzioni di lavaggio e manutenzione sono indicate nel 'cartellino qualità' fornito coi mobili. Tutti i cuscini sono realizzati esclusivamente in Italia con utilizzo di imbottiture di origine italiana.

Per una migliore protezione dei mobili proponiamo delle coperture in tessuto di poliestere con buone qualità idrorepellenti. Le coperture proteggono parzialmente dalla pioggia e intemperie nonché dalle impurità atmosferiche.

FABRICS – Roberti offers a wide choice of fabrics suitable for outdoor use and with peculiar features. All the fabric are UV resistant and have 4 price levels.

GROUP A – offers a wide choice of fabrics suitable for indoor and outdoor use combined with standard polyurethane paddings to be used indoor or in outdoor sheltered (in/out) areas.

GROUP AI – offers a wide choice of fabrics for indoor and outdoor use combined with polyurethane paddings. These paddings are covered with a water varnished polyester liner which makes the cushions totally water resistant. The smooth cushions of the backs and the decorative pillows contain a mix of polyurethane chips with open cells and natural fibres which let out moisture and are quick drying - thus preventing mildew. This is the ideal proposal for cushions you can leave outside, combining the comfort of the fabrics with the durability of the paddings.

GROUP BI – the fabrics of the category BI - in PVC, polyester and polyurethane - are water resistant. It can happen that the water enters through the stitches, but being the cushions with outdoor finishing, the water resistance is ensured. The paddings are in polyurethane coated with a water varnished polyester liner. The fabrics of the group BI are available only for some models of the collection - as specified in the price list-.

GROUP CI – the fabrics of the collection CI - in PVC, polyester and polyurethane - have a light polyester padding fixed by a thermowelding with horizontal stripes and are water resistant. It can happen that the water enters through the stitches, but being the cushions with outdoor finishing, the water resistance is ensured. The paddings are in polyurethane coated with a water varnished polyester liner. The fabrics of the group CI are available only for some models of the collection - as specified in the price list-.

All the fabrics of the categories A and AI can be hand washed with cold water at 30° and air dried. The fabrics of the group BI and CI must be regularly cleaned with a light wet cloth and a mild detergent. The stains must be removed as soon as possible to prevent they leave the imprint.

For further instructions about washing and maintenance please look at the information sheet supplied with the furniture.

All the cushions are entirely MADE IN ITALY, the paddings are of italian origin.

For an additional protection of the furniture we suggest the polyester covers which have a good water resistance. These covers protect partially from the rain, bad weather as well as from atmospheric impurities



TESSUTI - STOFFE – Roberti bietet eine breite Auswahl an Stoffen für den Außenbereich mit unterschiedliche Eigenschaften. Alle Stoffe haben eine starke Beständigkeit gegen UV-Strahlen. Es gibt 4 verschiedene Preiskategorien.

GRUPPE A – Breite Auswahl an Stoffen die für den Innen- wie auch für den Außenbereich geeignet sind: die Kissen haben Polyurethanschaum (diese Zusammenstellung empfehlen wir für überdeckte oder beschützte Flächen).

GRUPPE AI – Breite Auswahl an Stoffen die für den Innen- wie auch für den Außenbereich geeignet sind: die Kissen haben Polyurethanschaum überzogen mit einem Polyestergerewebe , lackiert mit wasserlöslichen Lack und wirken somit wasserdicht. Die sanften Rückenkissen und die kleine Wurfkissen enthalten ein Mix aus Polyurethan-Chips (offenporig) und Naturfaser das den Abfluss des Wassers ermöglicht, wie auch eine schnelle Trocknung (dies vermeidet den Schimmel). Diese Zusammenstellung ist die beste Lösung für den Außenbereich und bietet den richtigen Komfort und die Garantie einer langen Beständigkeit des Schaumstoffes. Die Kissen trocknen schneller, wenn man den Reißverschluss öffnet und diese an die Luft austrocknen lässt.

GRUPPE BI – Die Stoffen der Kat. BI sind aus PVC, Polyester und Polyurethan und wirken wasserabstoßend. Durch den Saum könnte das Wasser eindringen, doch mit dem Outdoor-Schaumstoff ist die Beständigkeit geschützt. Der Schaumstoff ist aus Polyurethan überzogen mit einem Polyestergerewebe , lackiert mit wasserlöslichen Lack. Die Stoffe der Kat. BI stehen nur für einige Modelle zur Verfügung, die auf der Preisliste angegeben sind.

GRUPPE CI – Die Stoffen der Kat. CI sind aus PVC, Polyester und Polyurethan und haben einen leichten Polyester-Schaum der mit einer waagerechten Heißversiegelung befestigt ist. Diese sind wasserabstoßend Durch den Saum könnte das Wasser eindringen, doch mit dem Outdoor-Schaumstoff ist die Beständigkeit geschützt. Der Schaumstoff ist aus Polyurethan überzogen mit einem Polyestergerewebe , lackiert mit wasserlöslichen Lack. Die Stoffe der Kat. CI stehen nur für einige Modelle zur Verfügung, die auf der Preisliste angegeben sind.

Die Stoffe der Kat. A und AI sind Hand waschbar (Wasser bis max 30°) und müssen an die Luft trocknen. Die Stoffe der Kat. BI und CI müssen regelmäßig mit einem feuchtem Lappen und neutraler Seife gereinigt werden. Ev. Flecken müssen sofort entfernt werden.

Zusätzliche Pflegehinweise finden Sie direkt auf der Ware auf dem Qualitäts-Schild.

Alle Kissen sind ausschließlich in Italien hergestellt mit italienischem Schaumstoff.

Für einen besseren Schutz der Möbel, bieten wir wasserabweisende Schutzhüllen aus einem Polyester-Gewebe an. Dadurch werden die Möbel vom Regen und Unwetter, aber auch von atmosphärischen Unreinheiten, bewahrt.

TISSUS – Roberti offre une large gamme de tissus conseillés pour l'extérieur avec des caractéristiques différentes. Tous les tissus sont résistants aux rayons UV et sont représentés en 4 catégories de prix.

GRUPE A – offre une large gamme de tissus pour l'intérieur et l'extérieur combinés avec des rembourrages en polyurethane; cette version est conseillée pour des lieux couverts (in/out) où abrités.

GRUPE AI – offre une large gamme de tissus pour l'extérieur avec des rembourrages des coussins en polyurethane revêtus avec un tissu en polyester verni à l'eau, donc hydrofuge. Les rembourrages des coussins souples des dossiers et les petits coussins décoratifs sont en chips de polyurethane et en fibres naturelles qui favorisent le drainage de l'eau afin de les préserver des taches de moisissures. Cela est la proposition idéale des coussins pour extérieur tout en assurant le confort des tissus et la résistance des rembourrages. Afin d'améliorer le séchage, il faut ouvrir les fermetures éclair des housses et les laisser essuyer à l'air.

GRUPE BI – les tissus du groupe BI sont en PVC, polyester et polyurethane et sont hydrofuges. Il peut y arriver que de l'eau s'infilte par les coutures, mais comme les rembourrages sont spécifiques pour l'extérieur, la résistance à l'eau est presque garantie. Les rembourrages sont en polyurethane revêtu par une toile en polyester vernie à l'eau. Les tissus du groupe BI sont disponibles uniquement pour certains modèles de la collection, comme spécifié dans la liste des prix.

GRUPE CI – les tissus du groupe CI sont en PVC, polyester et polyurethane, ont un léger rembourrage en polyester fixé par thermoscellage à bandes horizontales et sont hydrofuges. Il peut y arriver que de l'eau s'infilte par les coutures, mais comme les rembourrages sont spécifiques pour l'extérieur, la résistance à l'eau est presque garantie. Les rembourrages sont en polyurethane revêtus par une toile en polyester vernie à l'eau. Les tissus du groupe CI sont disponibles uniquement pour certains modèles de la collection, comme spécifié dans la liste des prix.

Tous les tissus des goup A et AI peuvent etre lavés à 30° max. et séchés dans un lieu bien aéré. Les tissus des groups BI et CI doivent etre nettoyyés en utilisant un chiffon doux et une solution nettoyante douce, sans les laver. S'il y a des eventuelles taches il faut les enlever dès que possible avant qu'elles se fixent.

D'autres instructions de nettoyage et entretien sont indiquées dans la "fiche qualité" fournie avec le mobilier.

Tous les coussins sont réalisés exclusivement en Italie en utilisant des rembourrages "Made in Italy".

Pour une meilleure protection du mobilier nous conseillons des housses en tissu polyester conçues avec un bon standard d'imperméabilité à l'eau. Les housses protègent partiellement de la pluie et des intempéries ainsi-que des impuretés atmosphériques.

thefabrics



KRISTAL OCRA
63% PP 37% PL
Martindale 18.000 cicli
cat. A-AI

MOSAIC OCRA
100% PP
Martindale 50.000 cicli
cat. A - AI

KRISTAL BLU
63% PP 37% PL
Martindale 18.000 cicli
cat. A - AI

MOSAIC BLU
100% PP
Martindale 50.000 cicli
cat. A - AI

TRICOT OCRA
55% PL 45% PP
Martindale 25.000 cicli
cat. A-AI

NAUTIC WHITE
87% PVC 12% PL 1% PU
Martindale 300.000 cicli
cat. B I

NAUTIC STRIPE WHITE
87% PVC 12% PL 1% PU
Martindale 300.000 cicli
cat. C I

NAUTIC TAUPE
87% PVC 12% PL 1% PU
Martindale 300.000 cicli
cat. B I

NAUTIC STRIPE TAUPE
87% PVC 12% PL 1% PU
Martindale 300.000 cicli
cat. C I

TRICOT BLU
55% PL 45% PP
Martindale 25.000 cicli
cat. A-AI

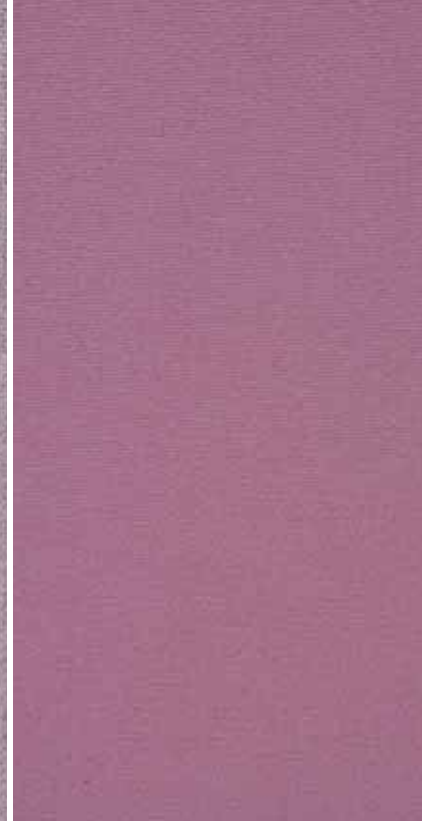
BLU MARINO (s)
100% PC
Martindale 35.000 cicli
cat. A - AI

NATTE AZZURRO (s)
100% PC
Martindale 17.000 cicli
cat. A - AI

NATTE GRIGIO (s)
100% PC
Martindale 19.000 cicli
cat. A - AI

NATTE BIANCO (s)
100% PC
Martindale 16.000 cicli
cat. A-AI





BIANCO (s)
100% PC
Martindale 20.000 cicli
cat.A - A1

RIGHE AVANA (t)
100% PC
Martindale 12.000 cicli
cat.A - A1

AVANA (t)
100% PC
Martindale 17.000 cicli
cat.A - A1

NOCE (s)
100% PC
Martindale 20.000 cicli
cat.A - A1

SAND (s)
100% PC
Martindale 10.000 cicli
cat.A - A1

NATTE LILLA (s)
100% PC
Martindale 18.000 cicli
cat.A - A1

LILLA (s)
100% PC
Martindale 26.000 cicli
cat.A - A1

PRUGNA (s)
100% PC
Martindale 15.000 cicli
cat.A - A1

ARANCIO (s)
100% PC
Martindale 15.000 cicli
cat.A - A1

AZZURRO (s)
100% PC
Martindale 15.000 cicli
cat.A - A1

NATTE ERICA (s)
100% PC
Martindale 16.000 cicli
cat.A-A1

NATTE FUMO (s)
100% PC
Martindale 19.000 cicli
cat.A-A1

TORTORA (s)
100% PC
Martindale 15.000 cicli
cat.A - A1

BROWNIES (s)
100% PC
Martindale 15.000 cicli
cat.A-A1

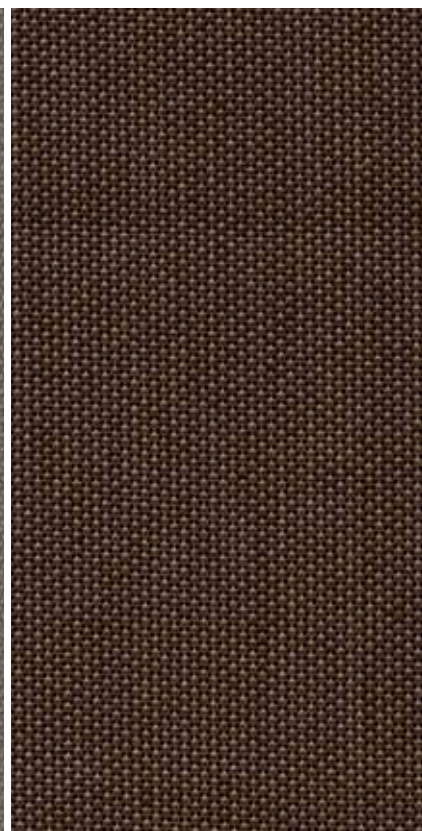
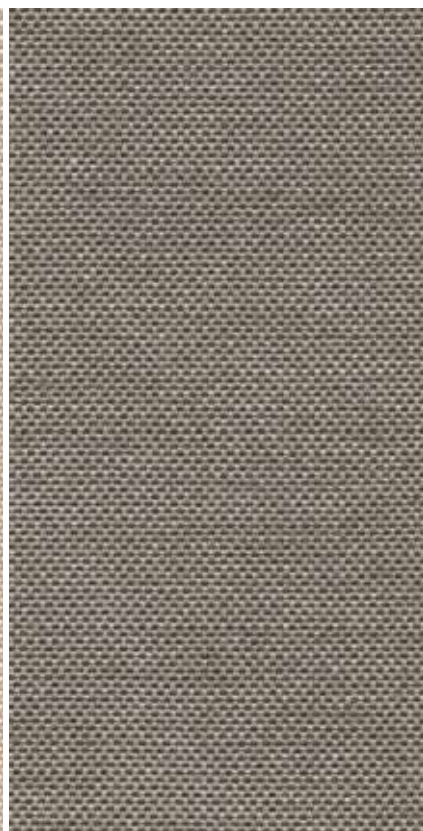
GIANDUIA (s)
100% PC
Martindale 20.000 cicli
cat.A - A1

MENTA
100% PP
Martindale 30.000 cicli
cat.A-A1

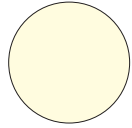
FLOWERS
100% PP
Martindale 25.000 cicli
cat.A-A1

PANAMA
100% CO/BW
Martindale 16.000 cicli
cat.A

BLACK (s)
100% PC
Martindale 26.000 cicli
cat.A - A1



white

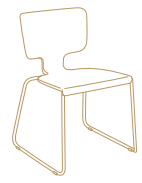


Coral Reef

(oval sunloom white)



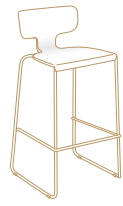
9860
oval sunloom
cm 55x54x80h
hs cm 46



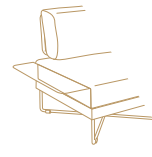
9860F
cm 55x54x80h
hs cm 46



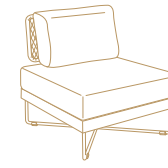
9862F
fibreglass
cm 58x60x79h
hs cm 47



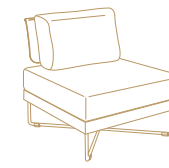
9863F
fibreglass
cm 50 x48x102h
hs cm 78



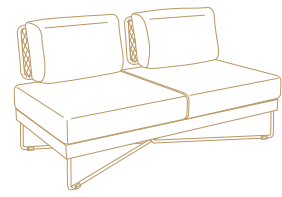
9800
cm 24x77x21h
option corda



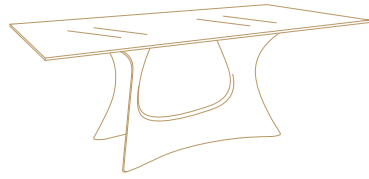
9801
oval sunloom
cm 75x83x83h
hs cm 26+15



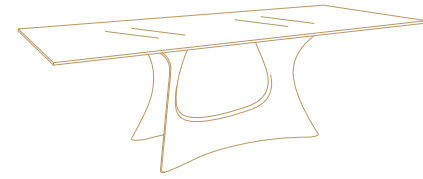
9801F
cm 75x79x83h
hs cm 26+15



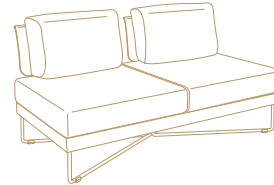
9802
oval sunloom
cm 150x83x83h
hs cm 26+15



9865F
laquered glass top
cm 110x220x74h



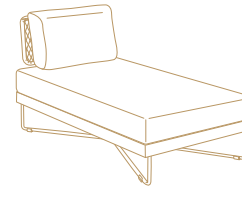
9866F
laquered glass top
cm 110x260x74h



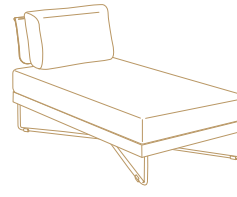
9802F
cm 150x79x83h
hs cm 26+15



9803
cm 77x77x41h
hs cm 26+15



9804
oval sunloom
cm 75x156x83h
hs cm 26+15



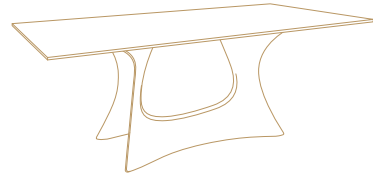
9804F
cm 75x152x83h
hs cm 26+15

terra

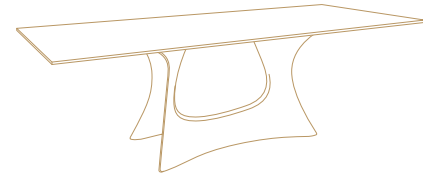


Coral Reef

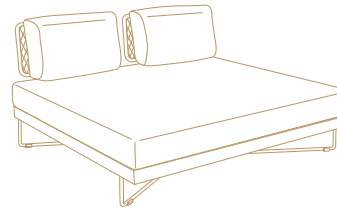
(oval sunloom terra)



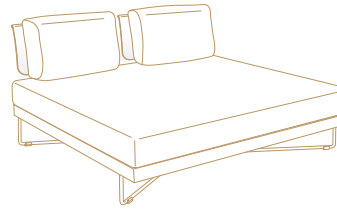
9867F
HPL top
cm 110x220x74h



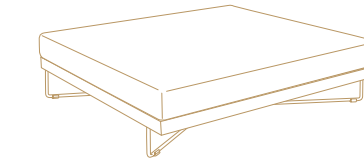
9868F
HPL top
cm 110x260x74h



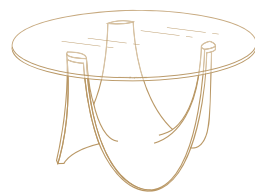
9805
oval sunloom
cm 150x206x83h
hs cm 26+15



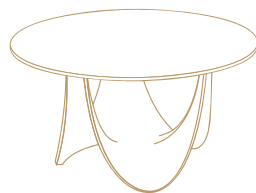
9805F
cm 150x202x83h
hs cm 26+15



9806
cm 150x200x41h
hs cm 26+15



9870F
transparent glass top
cm. diam. 150x74h

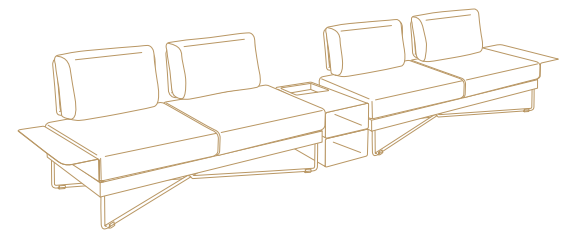


9871F
HPL top
cm. diam. 150x74h

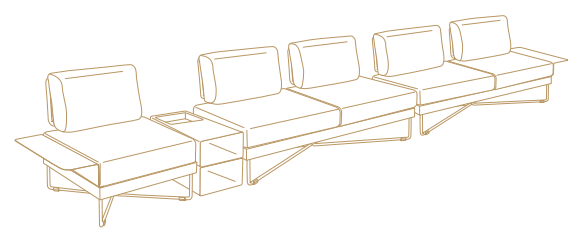
corda

- option corda:
- solo dove indicato
 - only available where indicated
 - lieferbar nur wo angegeben
 - disponible seulement pour les articles indiqués

white



9832
oval sunloom
cm 380x83x83h
hs cm 26+15

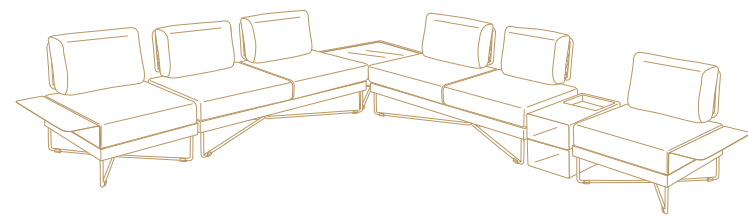


9833
oval sunloom
cm 455x83x83h
hs cm 26+15

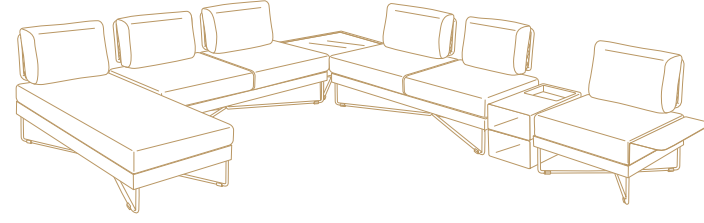
9832F
cm 380x79x83h
hs cm 26+15

9833F
cm 455x79x83h
hs cm 26+15

Coral Reef
(oval sunloom white)



9840
oval sunloom
cm 326x358x83x83h
hs cm 26+15

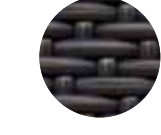


9841
oval sunloom
cm 302x358x83/155x83h
hs cm 26+15

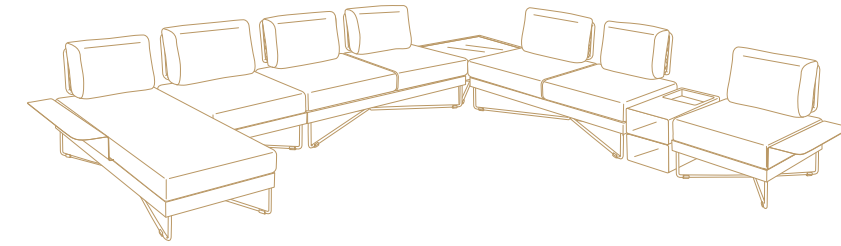
9840F
cm 326x358x79x83h
hs cm 26+15

9841F
cm 302x358x79/152x83h
hs cm 26+15

terra

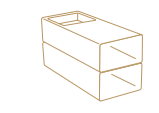


Coral Reef
(oval sunloom terra)



9842
oval sunloom
cm 401x358x83/155x83h
hs cm 26+15

9842F
cm 401x358x79/152x83h
hs cm 26+15



9818
cm 32x77x41h
option corda



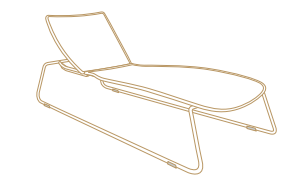
9817
cm 77x77x26h



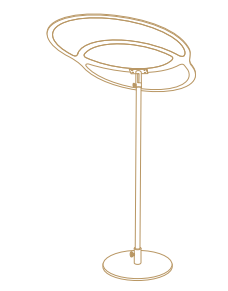
9859
fibreglass
cm 50x36x51h
option corda



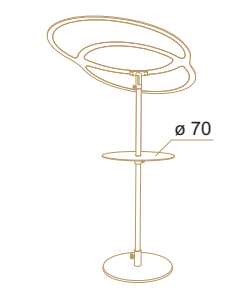
9850
cm 110x65x41h



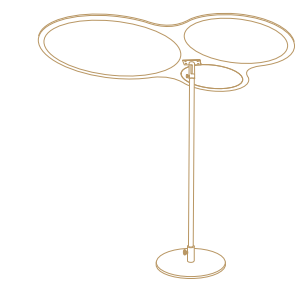
9857
fibreglass
cm 80x200x43h



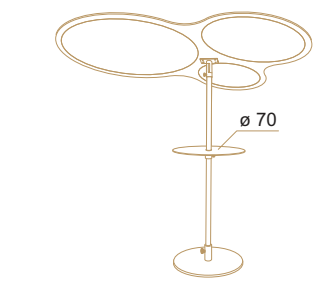
9852
cm 130x170x200h
only white - corda



9854
cm 130x170x200h
Ø 70x0,5h
only white - corda
(glazed steel stand)



9853
cm 199x141x200h
only white - corda



9855
cm 199x141x200h
Ø 70x0,5h
only white - corda
(glazed steel stand)



option corda:
- solo dove indicato
- only available where indicated
- lieferbar nur wo angegeben
- disponible seulement pour les articles indiqués

white



9720
sunweave bianco perla
cm 46x56x80h
hs cm 45



9721
sunweave bianco perla
cm 55x56x80h
hs cm 45



9723
straps only coffee
cm 46x56x80h
hs cm 45



9724
straps only coffee
cm 55x56x80h
hs cm 45

Hamptons Graphics
(sunweave bianco perla)



9750
cm 56x60x80h
hs cm 44+3

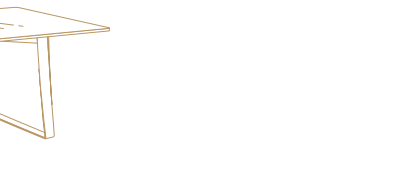


9751
cm 56x60x80h
hs cm 44+3

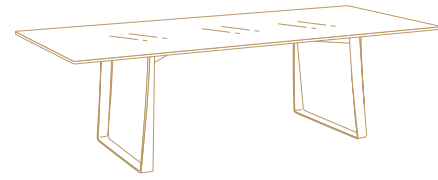
coffee



9725
glazed glass top
only white
cm 110x220x73h



9725
laquered glass top
only coffee
cm 110x220x73h

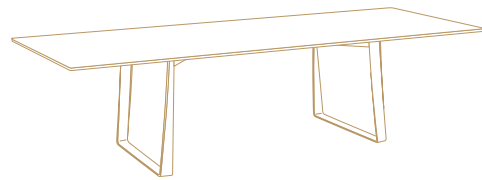
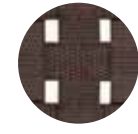


9726
glazed glass top
only white
cm 110x260x73h



9726
laquered glass top
only coffee
cm 110x260x73h

Hamptons Graphics
(straps coffee)



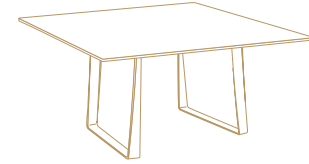
9727
HPL top
cm 110x220x74h



9728
HPL top
cm 110x260x74h

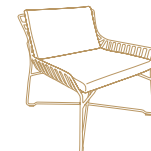
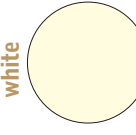


9729
HPL top
cm 110x300x74h

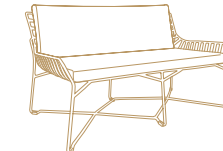


9730
HPL top
cm 160x160x74h

white



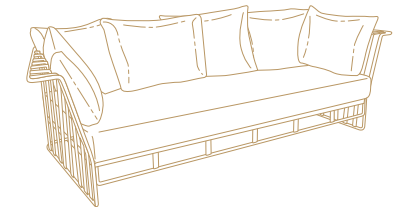
9733
cm 75x77x73h
hs cm 36+6



9734
cm 135x77x73h
hs cm 36+6

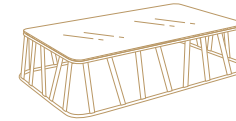


9731
cm 122x93x78h
hs cm 25+15

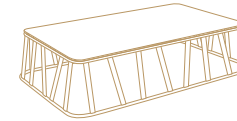


9732
cm 240x100x78h
hs cm 25+15

Hamptons Graphics
(sunweave bianco perla)



9736
glass top
cm 130x81x30h



9736H
HPL top
cm 130x81x30h



9735
glass top
cm 81x81x30h



9735H
HPL top
cm 81x81x30h

coffee



9739
glass top
cm 50x50x30h

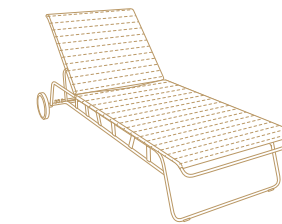
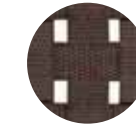


9739H
HPL top
cm 50x50x30h

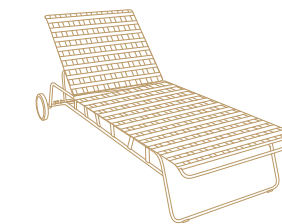


9755
cm 99x72x78h
hs cm 43+3

Hamptons Graphics
(straps coffee)



9737
sunweave bianco perla
cm 81x196x34h



9738
straps only coffee
cm 81x196x34h

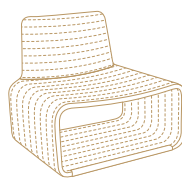
RCD

Registered Community Design
Modello Comunitario Registrato
Coral Reef - Hamptons Graphics
Collections

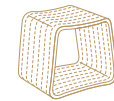
RCD

Registered Community Design
Modello Comunitario Registrato
Coral Reef - Hamptons Graphics
Collections

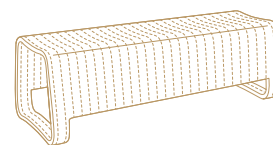
Hamptons
(sunweave musk - bianco perla)



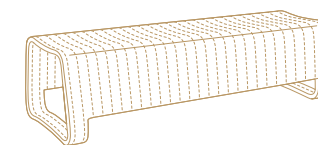
9625
cm 80x76x78h
hs cm 41



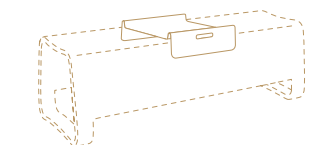
9626
cm 46x37x42h



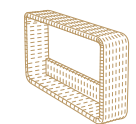
9627
cm 130x46x42h



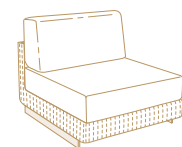
9628
cm 160x46x42h



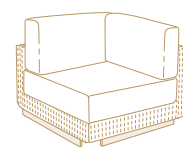
9629
cm 39x37x10h



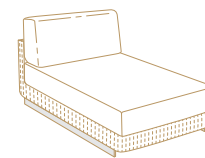
9600
cm 18x100x50h



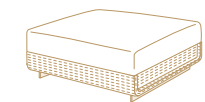
9601
cm 75x102x78h
(Hs. cm 19+19)



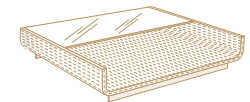
9602
cm 104x104x78h
(Hs. cm 19+19)



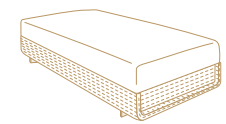
9603
cm 86x175x78h
(Hs. cm 19+19)



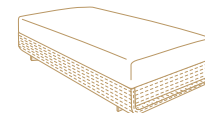
9608
cm 86x86x38h
(Hs. cm 19+19)



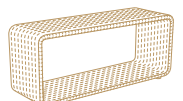
9607
cm 86x86x19h



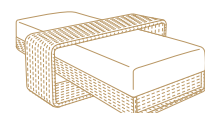
9609
cm 86x200x38h
(Hs. cm 19+19)



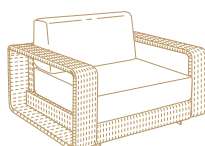
9605
70x180x38h
(Hs. cm 19+19)



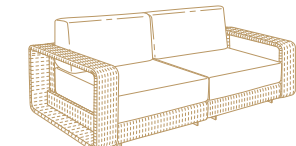
9606
cm 120x40x50h



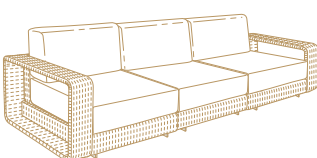
9610
120x180x50h
(Hs. cm 19+19)



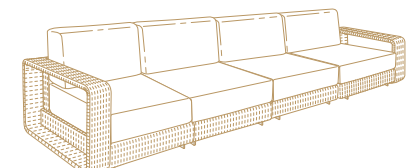
9611
cm 111x102x78h
(Hs. cm 19+19)



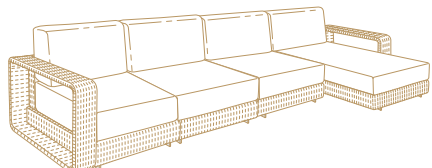
9612
cm 186x102x78h
(Hs. cm 19+19)



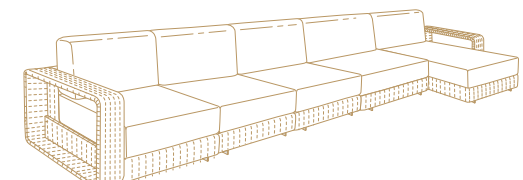
9613
cm 261x102x78h
(Hs. cm 19+19)



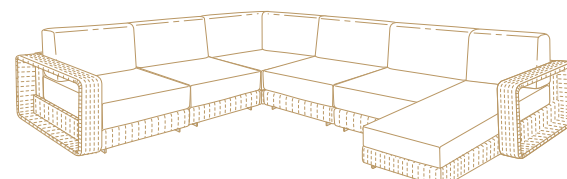
9614
cm 336x102x78h
(Hs. cm 19+19)



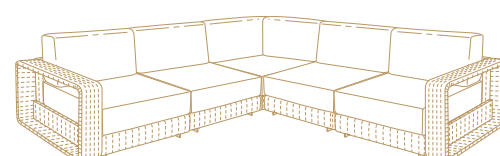
9618
cm 347x102/177x78h
(Hs. cm 19+19)



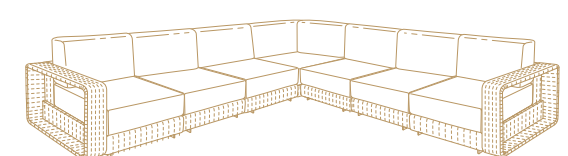
9619
cm 422x102/177x78h
(Hs. cm 19+19)



9620
cm 358x272x102/177x78h (Hs. cm 19+19)



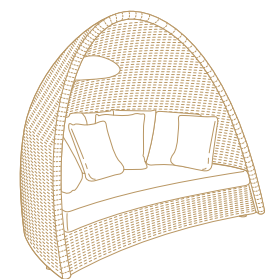
9615
cm 272x272x102x78h (Hs. cm 19+19)



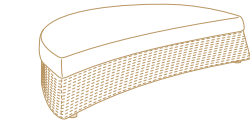
9617
cm 347x347x102x78h (Hs. cm 19+19)



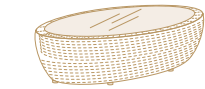
Igloo
(sunweave
bianco perla)



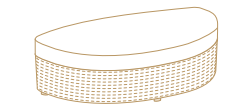
9631
175x145x150h
(Hs. cm 23+11)



9632
cm 163x135x34h
(Hs. cm 23+11)



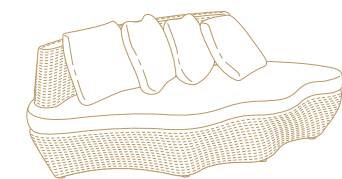
9634
cm 110x60x32h



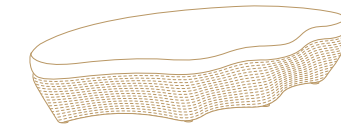
9635
cm. 165x80x34h
(Hs. cm 23+11)



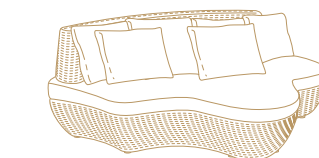
Les Iles
(sunweave cacao)



9591
cm 187x100x77h
(Hs. cm 32+11)



9592
cm 187x100x32h
(Hs. cm 32+11)



9593
cm 198x155x77h
(Hs. cm 32+11)



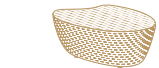
9594
198x155x32h
(Hs. cm 32+11)



9595
cm Ø58x32h



9596
cm Ø58x32h
(Hs. cm 32+11)



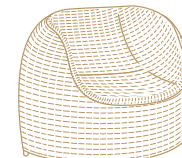
9597
cm 58x78x32h



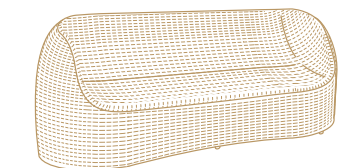
9598
58x78x32h
(Hs. cm 32+11)



Coconut
(sunweave cacao)



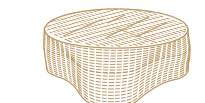
9581
cm 117x99x75h
(Hs. cm 38+4)



9582
cm 211x84x75h
(Hs. cm 38+4)



9584
cm Ø55x44h
(Hs. cm 44+4)



9585
cm Ø105x44h



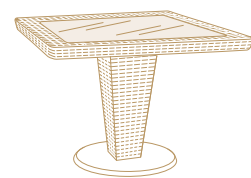
St. Tropez
(sunloom chocolate)



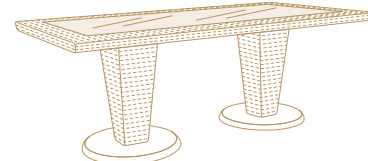
9540
cm 55x58x78h (Hs. cm 45)



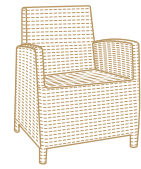
9541
cm 63x58x78h (Hs. cm 45)



9542
cm 100x100x75h



9544
cm 100x220x75h



9543
cm 60x62x80h
(Hs. cm 43+5)



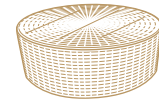
9570
cm 87x110x78h
(Hs. cm 30+2)



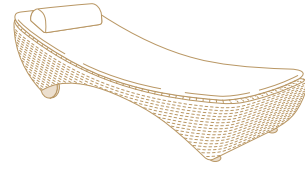
9571
cm 80x67x30h



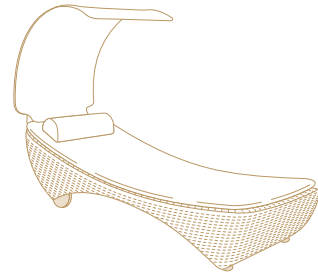
9572
cm Ø45x45h



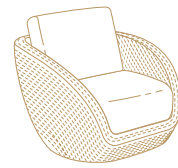
9573
cm Ø70x30h



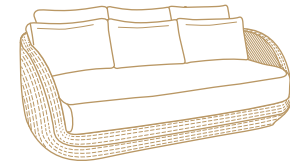
9567
cm 72x200x51h
(Hs. cm 28+2,5)



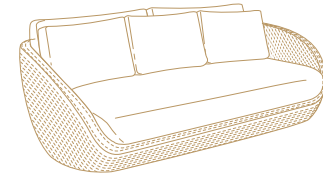
9568
cm 72x200x122h
(Hs. cm 28+2,5)



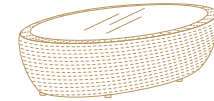
9575
cm 86x95x82
(Hs. cm 20+20)



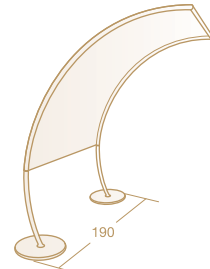
9576
cm 186x116x82h
(Hs. cm 20+20)



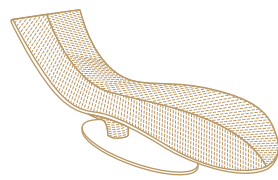
9579
cm 222x116x82h
(Hs. cm 20+20)



9557
cm 110x60x32h



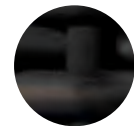
9577
cm 154x130x185



9578
cm 70x182x76h
(Hs. cm 34+2)



Papaya
(sunweave moka - bianco perla)



9530
cm 50x57x82h (Hs. cm 45)



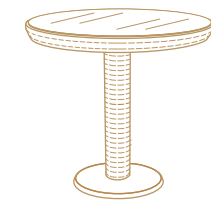
9531
cm 56x57x82h (Hs. cm 44)



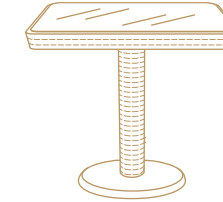
9532
cm 65x60x84h (Hs. cm 44)



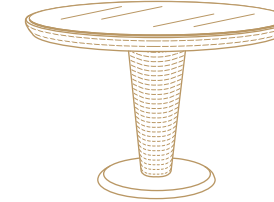
9539
cm 47x47x76h



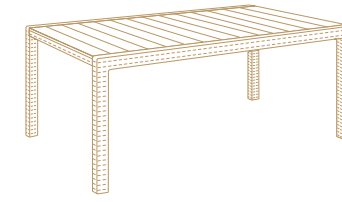
9535
cm Ø70x75h



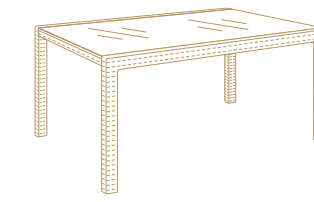
9536
cm 80x80x75h



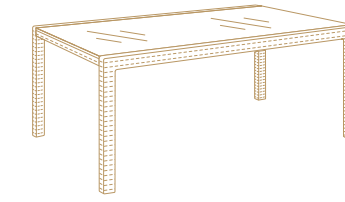
9537
cm Ø120x75h



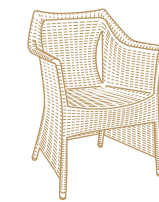
9507B
cm 100x200x75h
only moka



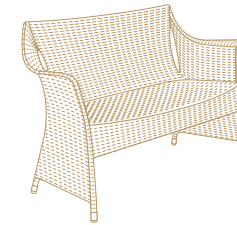
9509
cm 100x160x75h
only bianco perla



9509B
cm 100x200x75h
only bianco perla



9533
cm 68x58x84h
(Hs. cm 43+5)



9534
cm 128x63x85h
(Hs. cm 43+5)

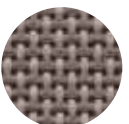


9538
cm 72x47x47h

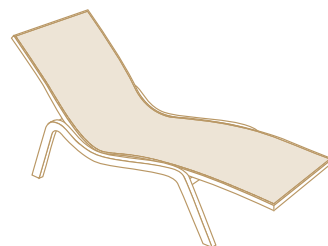


Caribe
(sunloom chocolate)

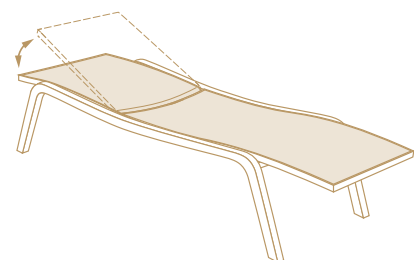
terra



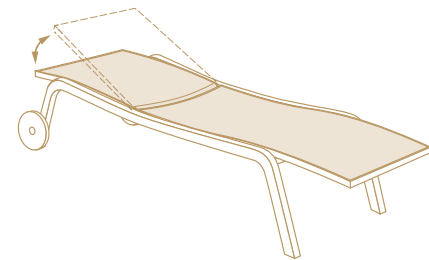
Samba Rio (batyline)



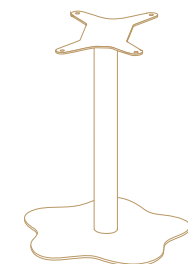
9587
cm 64x168x80h
Hs. cm 34+3



9588
cm 67x196x40h
Hs. cm 38+3



9589
cm 67x196x40h
Hs. cm 38+3



9586
cm Ø 60x71,5h
only aluminum

Tops

Compact Ivory HPL top



art. **9681** cm. 60
art. **9682** cm. 70
art. **9683** cm. 80
art. **9687** cm. 100



art. **9684** cm. 60x60
art. **9685** cm. 70x70
art. **9686** cm. 80x80
art. **9690** cm. 90x90
art. **9699** cm. 100x100

Topalit carrara bianco Compact outdoor top



art. **9661** cm. 60
art. **9662** cm. 70
art. **9663** cm. 80



art. **9664** cm. 60x60
art. **9665** cm. 70x70
art. **9667** cm. 80x80
art. **9670** cm. 90x90

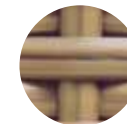
Topalit bianco Compact outdoor top



art. **9651** cm. 60
art. **9652** cm. 70
art. **9653** cm. 80
art. **9654** cm. 90




art. **9656** cm. 60x60
art. **9657** cm. 70x70
art. **9658** cm. 80x80
art. **9659** cm. 90x90




Samba (sunweave apricot-moka)



9520
cm 52x61x97h (Hs. cm 45)




9521
cm 57x62x98h (Hs. cm 45)




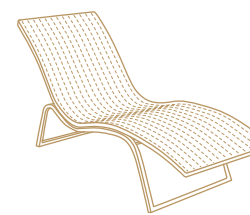
9522
cm Ø120x75h




9523
cm 100x220x75h




9527
cm 90x160x75h (cm 90x210)



9524
cm 57x161x83h (Hs. cm 32+3)
bianco perla - apricot


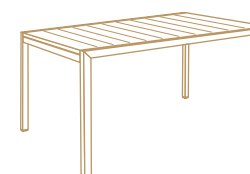


9525
cm 73x196x35h (Hs. cm 35+3)
bianco perla - apricot - moka




9526
cm Ø50x44h
bianco - aluminum

Santorini (teak)



9506
cm 100x160x75h



Gli articoli contrassegnati con questo simbolo, sono di fine serie e s'intendono disponibili solo fino a esaurimento scorte.

The articles marked are out of production and are only available until stocks last.

Die mit gekennzeichneten Modelle sind nicht mehr in Produktion und können nur solange der Lagervorrat reicht, geliefert werden.

Les articles marqué sont des fins de série et sont considérés disponibles jusqu'à épuisement des stocks.



ROBERTI RATTAN srl
31020 Corbanese di Tarzo
Z.I. (Treviso) Italy
Tel. +39.0438.933022
Fax +39.0438.933005
info@robertirattan.com
www.robertirattan.com

Greenfield

photo: Studio Rocci / AB studio / Marco Alberi Auber
print: Ditte arti grafiche

Designers:
Santiago Sevillano
GV Plazzogna + Roberto Papparotto
Adriano e Veronica Balutto
Giorgio Del Piero
Studio Tecnico Roberti

2014

Greenfield

OUTDOOR PLEASURE



Roberti

ROBERTI RATTAN srl
31020 Corbanese di Tarzo - Z.I. (Treviso) Italy
Tel. +39.0438.933022
Fax +39.0438.933005
info@robertirattan.com
www.robertirattan.com